

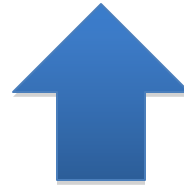


Visual Analytics through Maps

GeoCommons delivers lightweight GIS to non-technical users – enabling numerous data sources to be interactively explored to detect trends, risks and opportunities often lost in spreadsheet



Visual Analytics



GIS Data

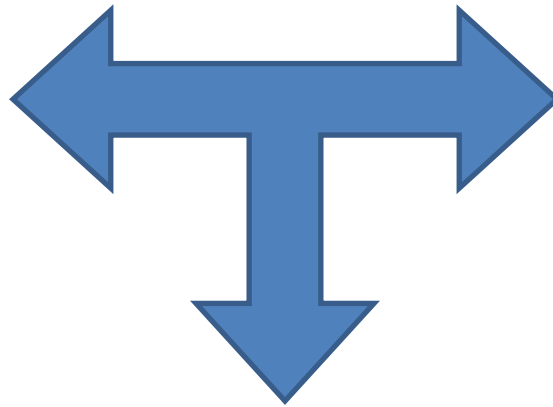
Spreadsheet
Data

Real Time Data

Next Generation Mapping - Bridging GIS and the GeoWeb



GIS Professionals



Subject Matter Experts



Citizens



 **Finder!**
Open the World's Data.

 **Maker!**
Map the World's Data.

Store, Organize and Share your GeoData

Upload a file from your computer

[Browse...](#)

Or, upload from a file from the internet

[Upload!](#)

Supported formats:

- CSV (Spreadsheet)
[How to prepare a CSV](#)
- KML
- GeoRSS
- Shapefile
- Text Documents
[About Document Formats](#)

Data into

Download

[KML](#)
GoogleEarth, Microsoft Virtual Earth and others.

[Shapefile](#)
ESRI, uDig and others.

[Spreadsheet](#)
CSV format. Excel, OpenOffice and others.

Data out of GeoCommons

Map Details

Description:
This map contains points for all of the pirate attacks in the world in 2008 (through November) collected by the IMB. The points contain attributes for various characteristics of the attacks. Attribute information is provided in this dataset both as text and coded. The coordinates were collected from the IMB website.

Tags: [global](#) [imb](#) [piracy](#)

Download

[KML](#)
GoogleEarth, Microsoft Virtual Earth and others.

Data used in this map

Global Piracy Incidents [Details](#)

Designed by: [admin](#) | [edit](#) | [print](#) | [embed](#) [Details](#)

LAYERS

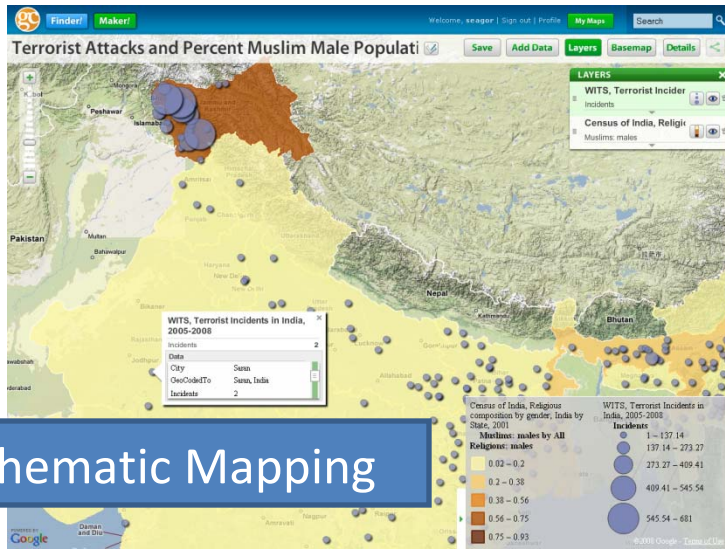
Global Piracy Incidents

Quarter of the Attack

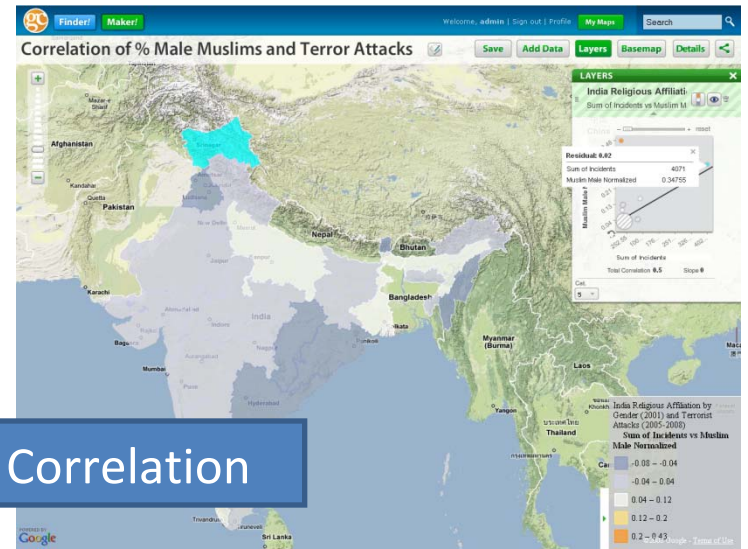


Maps out of GeoCommons

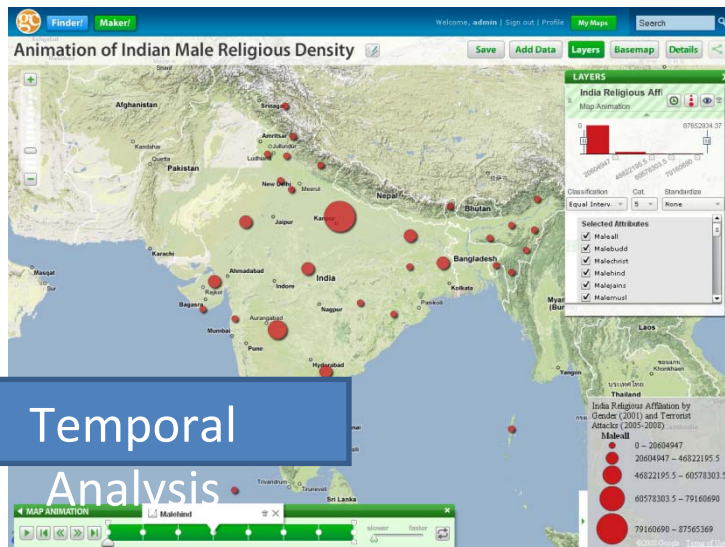
Geographic Analysis



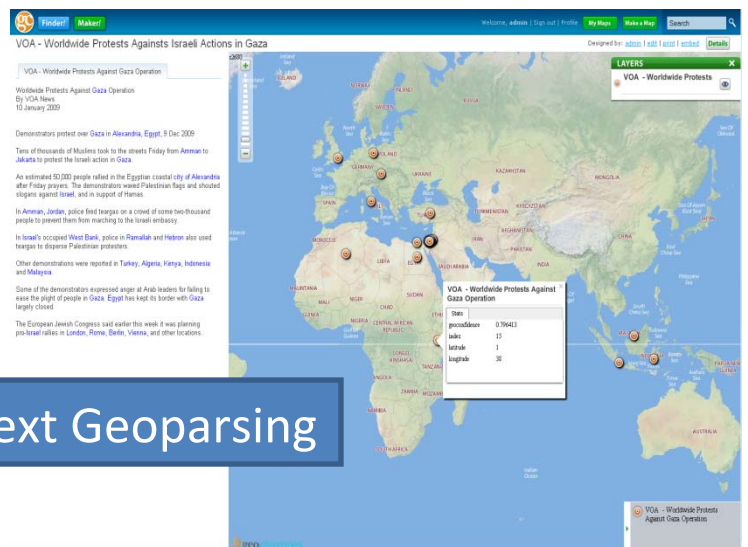
Thematic Mapping



Correlation



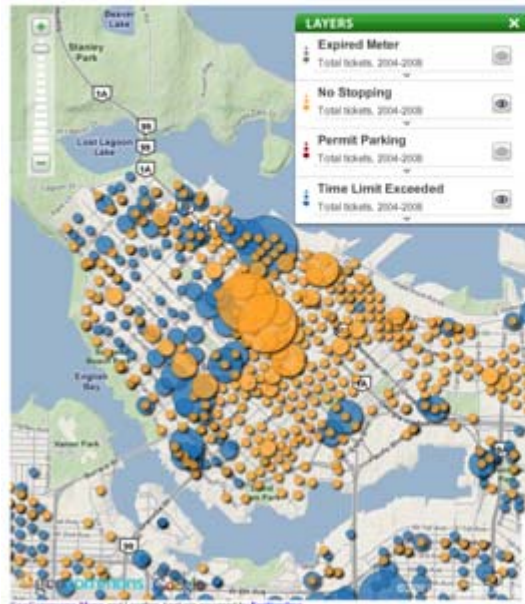
Temporal Analysis



Text Geoparsing

VANCOUVER'S MOST-TICKETED AREAS

The interactive map below shows you how many parking tickets have been issued on each block in the City of Vancouver, broken down by the four most common offences. The larger the dot, the more tickets have been issued. Click on a dot to get exactly how many tickets have been issued in that block. You can click the "eye" icon beside each type of offence to turn data for that violation type either on or off. And click the "fit" button in the top right hand corner to hide the legend. You can zoom into a particular neighbourhood to have a closer look. Blocks with fewer than 10 tickets (or 50 in the case of no-stopping offences) are not shown. For more detailed information on parking violations on a particular street, or those issued to particular vehicle, use the Sun's [searchable parking violation database](#).



Microsoft

Find out how to:

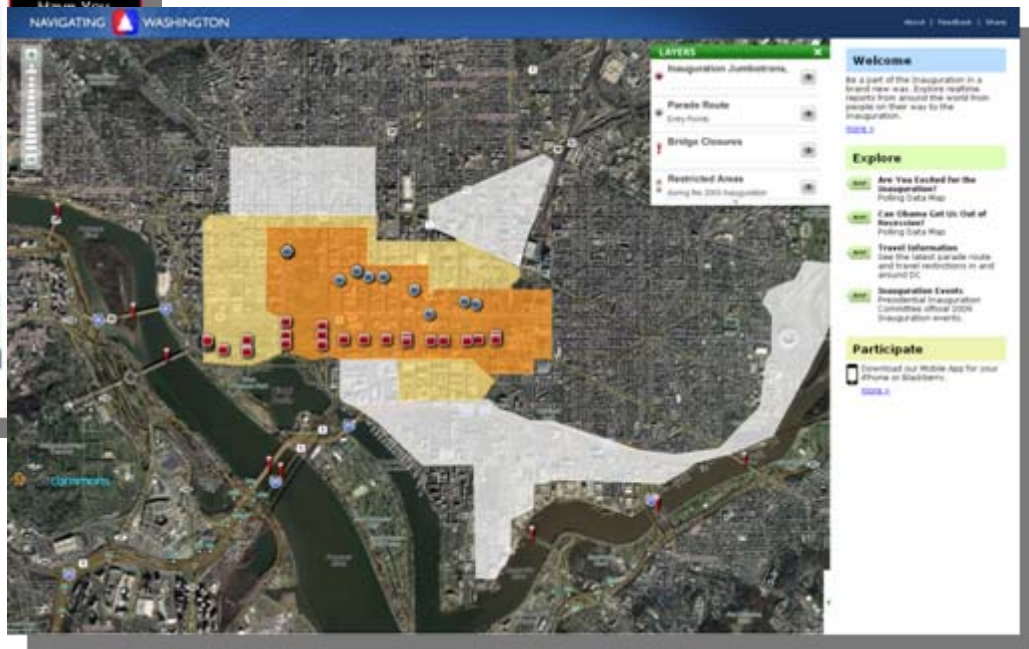
Get more driving records data. Visit the Microsoft Resource Centre.

SPONSORED LINKS

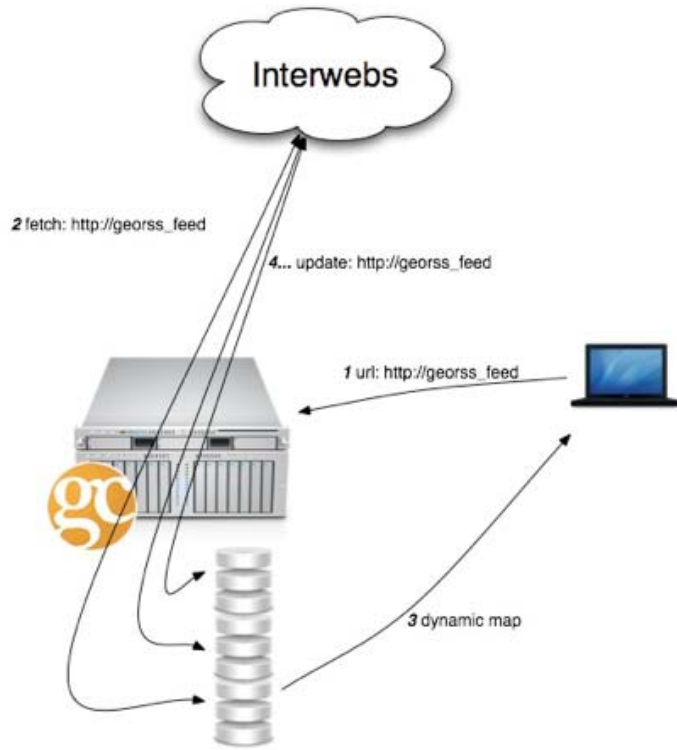
- Great tips and advice at [working.com](#)
- Find Cars, Road Tests and Dealers
- Find great job advice today!

RECENT COLUMNISTS

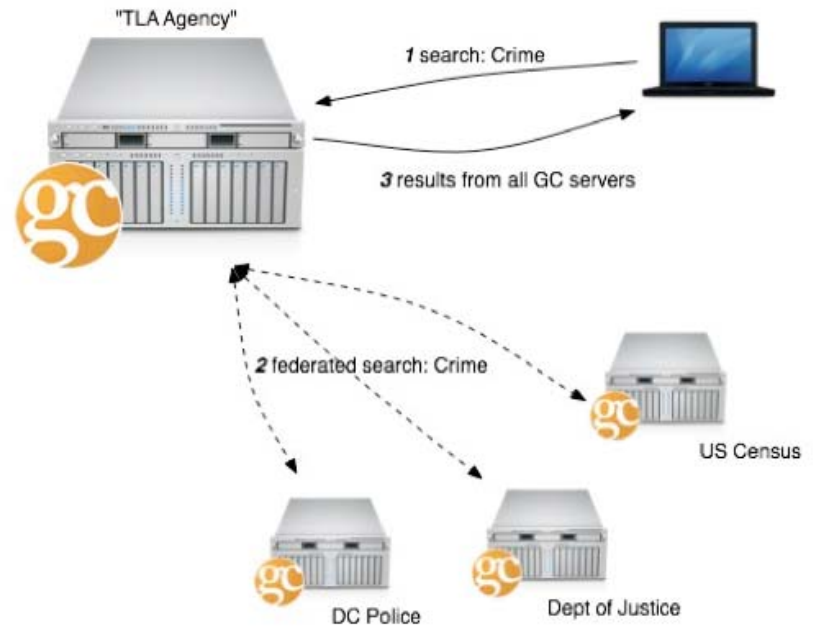
- Stephen Hume**
It's an old story
- Michael Geller**
Affordable housing can be built at an affordable price
- Steve Whyte**
Blades of glory



Embed the map into existing collaboration tools or as a standalone dashboard



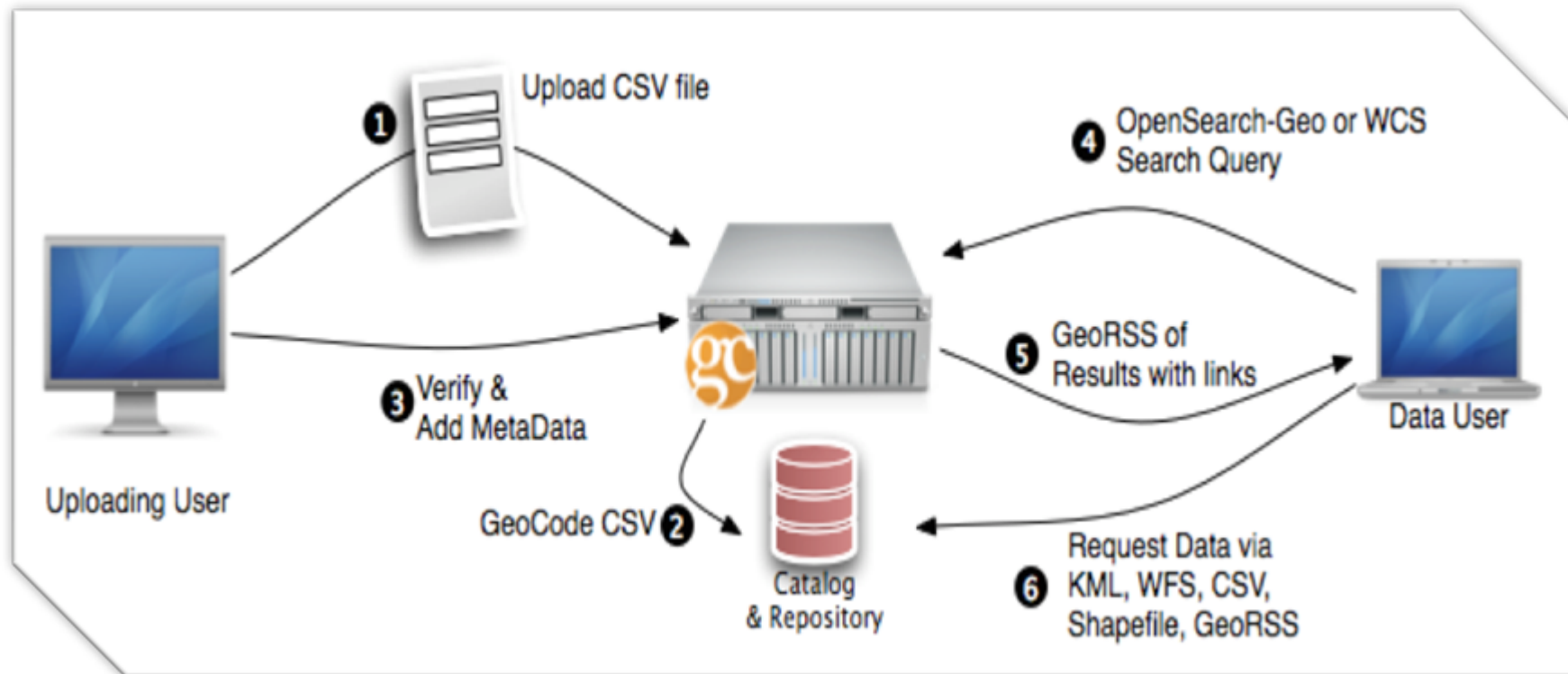
Dynamic Data



Federation

Pumpkin Release

DEMO



Turning tabular data into geographic data for the map