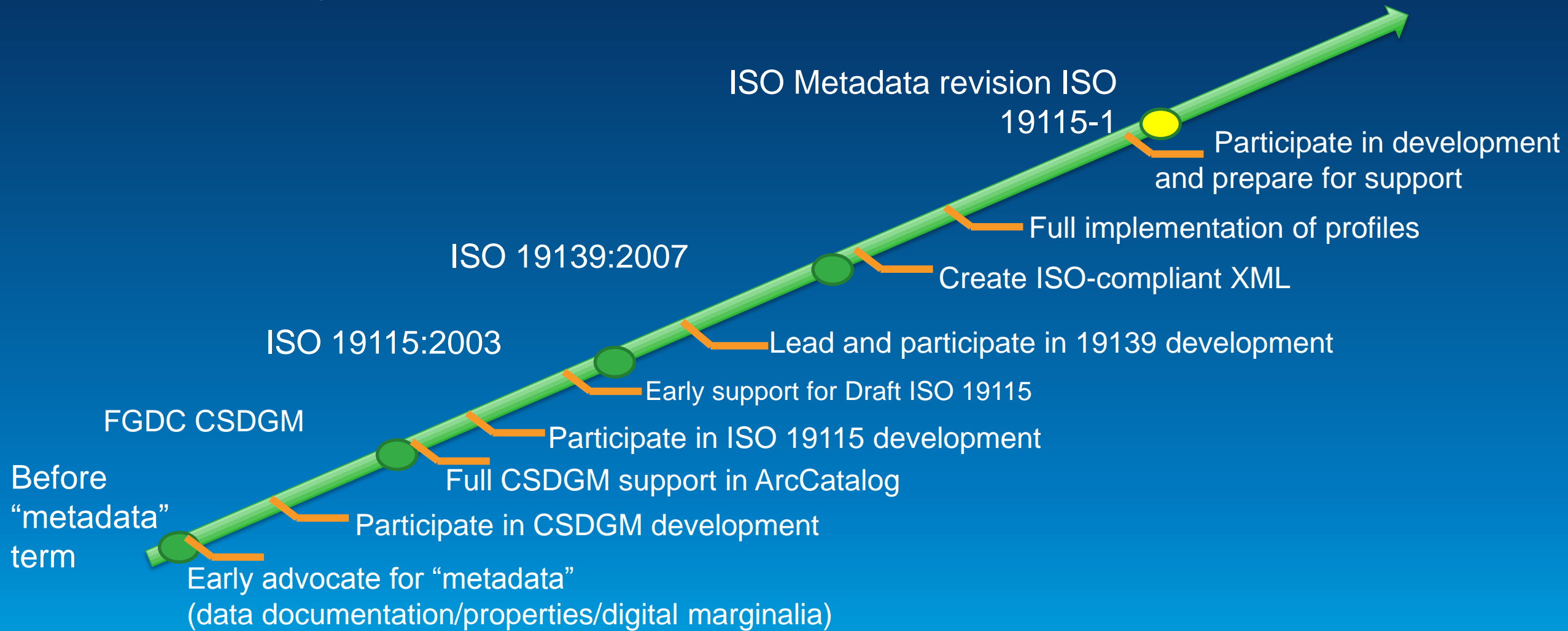




ArcGIS Metadata Editor

Aleta Vienneau

Metadata @ Esri



Different types of metadata standards

- Content standards
 - What to write
 - Optionality

! [purpose is required](#)

Title

Different types of metadata standards

- Implementation specifications
 - Format
 - Validity

```
<identificationInfo>
  <MD_DataIdentification>
    <citation>
      <CI_Citation>
        <title>
          <gco:CharacterString>Types of vegetation within the park</gco:CharacterString>
        </title>
      </CI_Citation>
    </citation>
  </MD_DataIdentification>
</identificationInfo>
```

ArcGIS metadata goals

- **Support metadata standards and selected profiles**
- **Create valid metadata**
- **Good user experience**
- **Common experience for all users**
- **Simplify workflows**
- **Support the ArcGIS platform**

ArcGIS metadata standards support

- ***Content Standard for Digital Geospatial Metadata (CSDGM) / mp***
 - Content associated with ISO 19110:2005
- **ISO 19115:2003 / ISO 19139:2007**
- **ISO 19119:2005 / OGC CSW 2008**

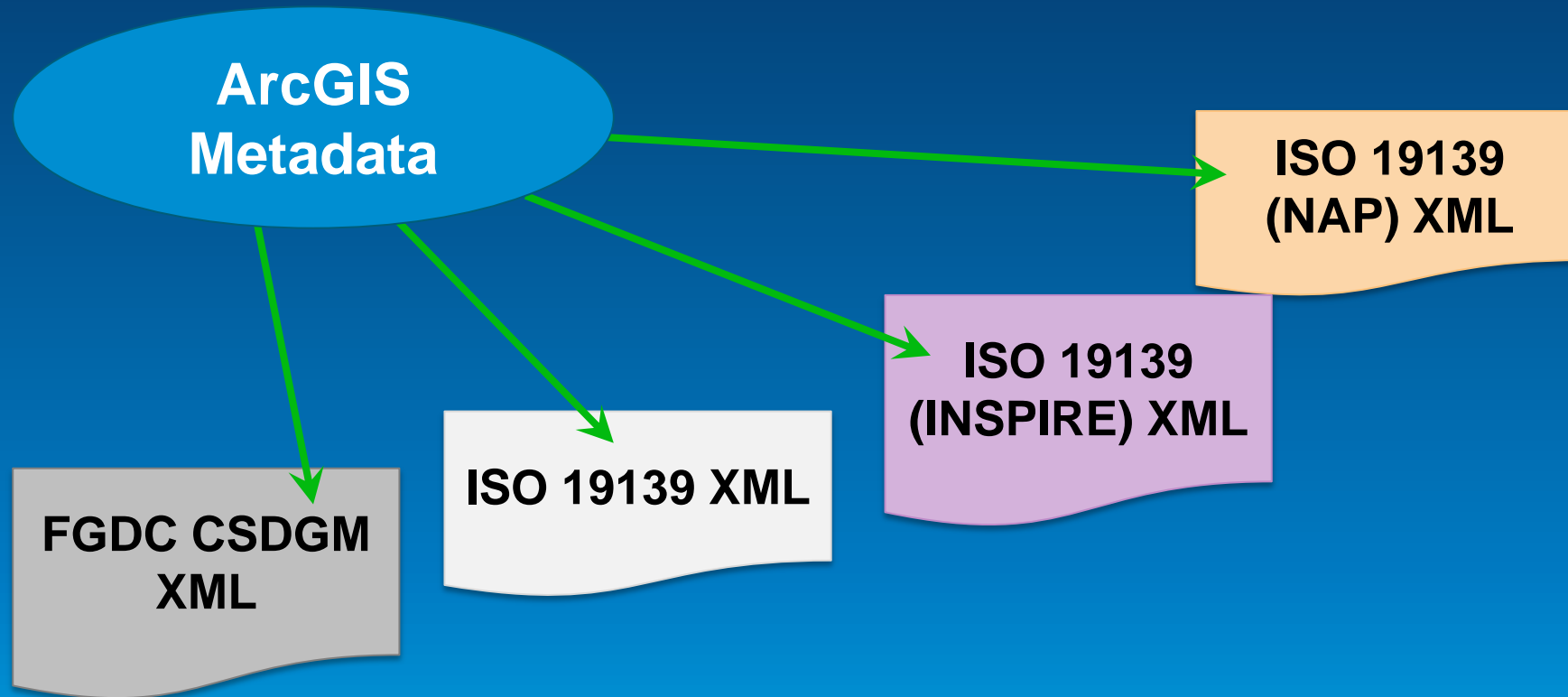
ArcGIS metadata standards support

- **Profiles**
 - **North American Profile of ISO 19115:2003 (NAP)**
 - **INSPIRE Metadata Directive**
- **Both are based on ISO 19115/19139**
- **Both reference ISO 19119 content**

ArcGIS metadata standards support

- ArcGIS for Desktop metadata content stored in the ArcGIS metadata format
- Includes all concepts for supported standards and profiles

ArcGIS metadata standards support



ArcGIS metadata standards support

- **Set the ArcGIS Metadata Style in ArcGIS for Desktop**
- **Author metadata content**
- **Export metadata to standard format**
- **Validate metadata for standard**
- **Publish to metadata catalog**

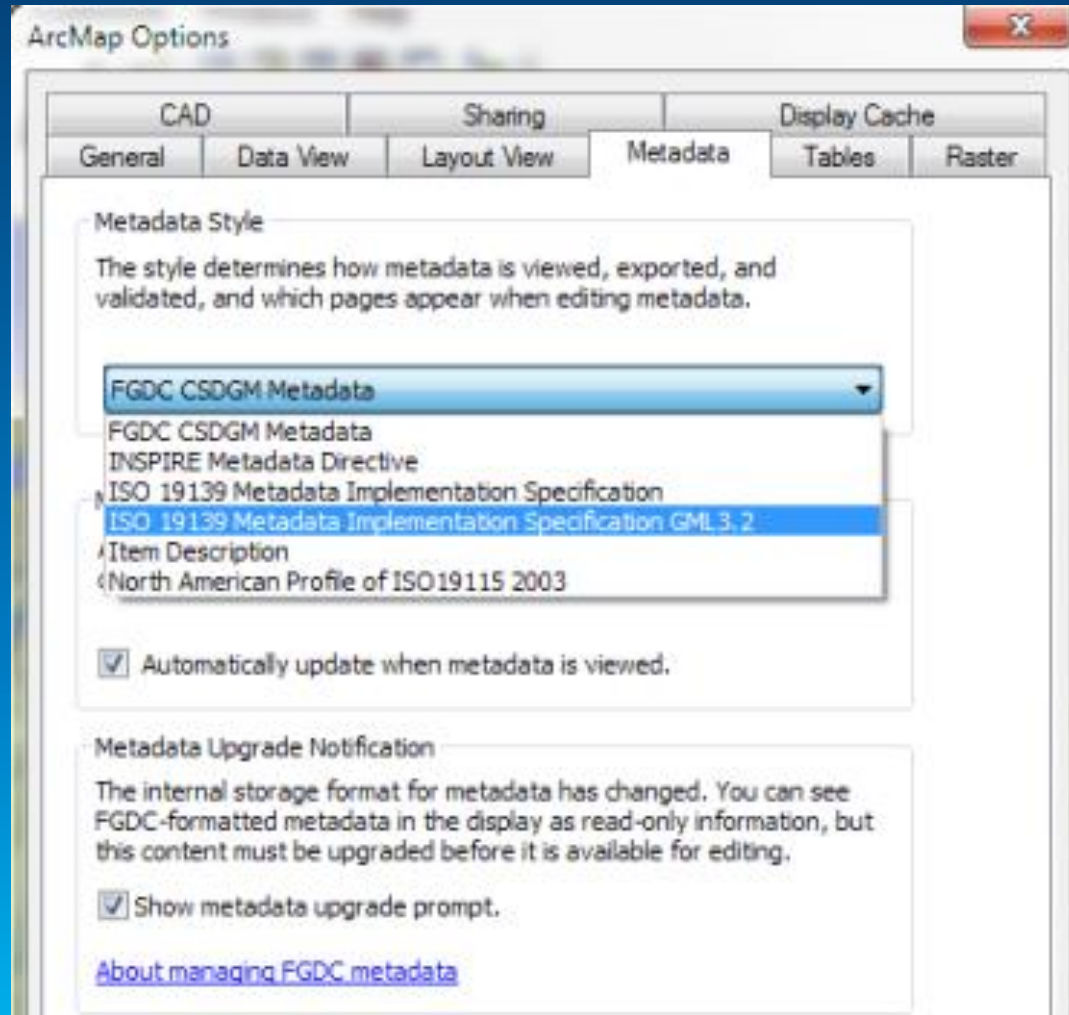
Set the ArcGIS Metadata Style

- **Metadata style**
 - **Filters the full set of concepts**
 - **Associated with metadata standards**
 - **Set in Options dialog box**

Set the ArcGIS Metadata Style

- **Default metadata style: Item Description**
 - Quickly document items
 - Support discovery when items are published
 - Portion of an item's full metadata
- **Full metadata—use another style**

Set the ArcGIS Metadata Style



Set the ArcGIS Metadata Style

- **Determines how metadata is**
 - **Displayed**
 - **Edited**
 - **Exported**
 - **Validated**
- **Set once to meet organizational requirements**

Set the ArcGIS Metadata Style

- Adds or removes pages
- Adds or removes elements on a page
- Changes values in some drop-down lists
- Validation rules are appropriate

Author metadata content

- **Focus on providing content indicated by the ArcGIS metadata editor**
 - Messages based on standard conditions and guidelines
 - Messages change as you type
 - See the metadata's status at a glance

Author metadata content

The screenshot displays a software interface for editing metadata. On the left is a navigation pane with sections: Overview, Metadata, and Resource. The 'Citation Contacts' item is selected. The main area shows a warning box with three error messages: 'a name, organization or position is required for the responsible party', 'a role is required for the responsible party', and 'a linkage URL is required'. Below this is the 'Resource Citation Contacts' form, which includes fields for Name, Organization, Position, Role (set to 'Empty'), Email, and Linkage. The Role and Linkage fields are highlighted in red. At the bottom, a descriptive text reads: 'The name of an organization associated with the resource. The name of an individual, organization, or position must be provided. Data type: CharacterString. From: ISO 19115:2003.'

Save X Exit

Overview

- Item Description
- Topics & Keywords
- Citation
- Citation Contacts
- Contacts Manager
- Locales

Metadata

- Details
- Contacts
- Maintenance
- Constraints

Resource

- Details
- Extents
- Points of Contact

Resource Citation Contacts

Contact:

Name

Organization

Position

Role

Contact Information

Email

Online Resource

Linkage

The name of an organization associated with the resource. The name of an individual, organization, or position must be provided. Data type: CharacterString. From: ISO 19115:2003.

Export content to a standard format

- **Export metadata content to standard format XML file**
 - **Export button in Description tab**
 - **Export Metadata gp tool**
- **Converts ArcGIS metadata to standard XML format**
- **Result stored in a stand-alone XML file**

Validate content with a standard schema

- **Validate exported file using XML schema**
 - Validate button in Description tab
 - Validate Metadata gp tool
- **Validate file using Microsoft .NET Framework XML capabilities**
 - Provides warning and error messages

FGDC CSDGM Metadata Style

- **Validate button: validates using online FGDC XML DTD**
- **Validate with mp**
 - **Export to CSDGM XML file**
 - **Run USGS MP Metadata Translator tool with Conversion Type = None**
 - **Warning and error messages produced by mp**

ISO 19139 Metadata Style

- **Validate button: validates using online ISO XML Schemas**
 - **One style supports GML 3.2.0 namespace**
 - **ISO 19139 Metadata Implementation Specification**
 - **One style supports GML 3.2.1 namespace**
 - **ISO 19139 Metadata Implementation Specification GML3.2**

North American Profile (NAP) Style

- **Additional codelist values and mandatory elements**
 - Supports tighter transition from CSDGM
- **NAP-specific rules available in the editor**
- **No NAP-specific XML Schemas**
- **Exported metadata validates with ISO 19139 for data or CSW for services**

INSPIRE Metadata Directive Style

- Supports creating ISO metadata that conforms to the INSPIRE Metadata Directive
- Limited codelist values in the editor as appropriate
- INSPIRE-specific rules available in the editor
- Exported metadata validates with ISO 19139 for data or CSW for services

Publish exported metadata file

- **Publish standard-format XML file to a metadata catalog**

Other ISO Standards and Profiles

- **Use the ArcGIS Metadata Toolkit to customize the ArcGIS metadata editor**
 - **Download from support.esri.com**
 - **Create a custom metadata style**
 - **Documents the ArcGIS metadata format**

Other ISO Standards and Profiles

- **Code for all pages in the metadata editor**
 - **C# WPF application with XAML forms**
 - **Modify elements on existing pages**
 - **Add custom pages**
 - **Change codelist values**
 - **Change validation rules**
- **Programming guide**
- **Sample project**

ArcGIS metadata standards support

- **A flexible system that adapts to changing standards**
- **Enhances interoperability**

What's next for ArcGIS

- **Building metadata support into ArcGIS Pro**
- **Preparing to implement ISO 19115-1**
- **Improving usability of the ArcGIS metadata editor**



Understanding our world.