

## North Carolina Lidar Acquisition





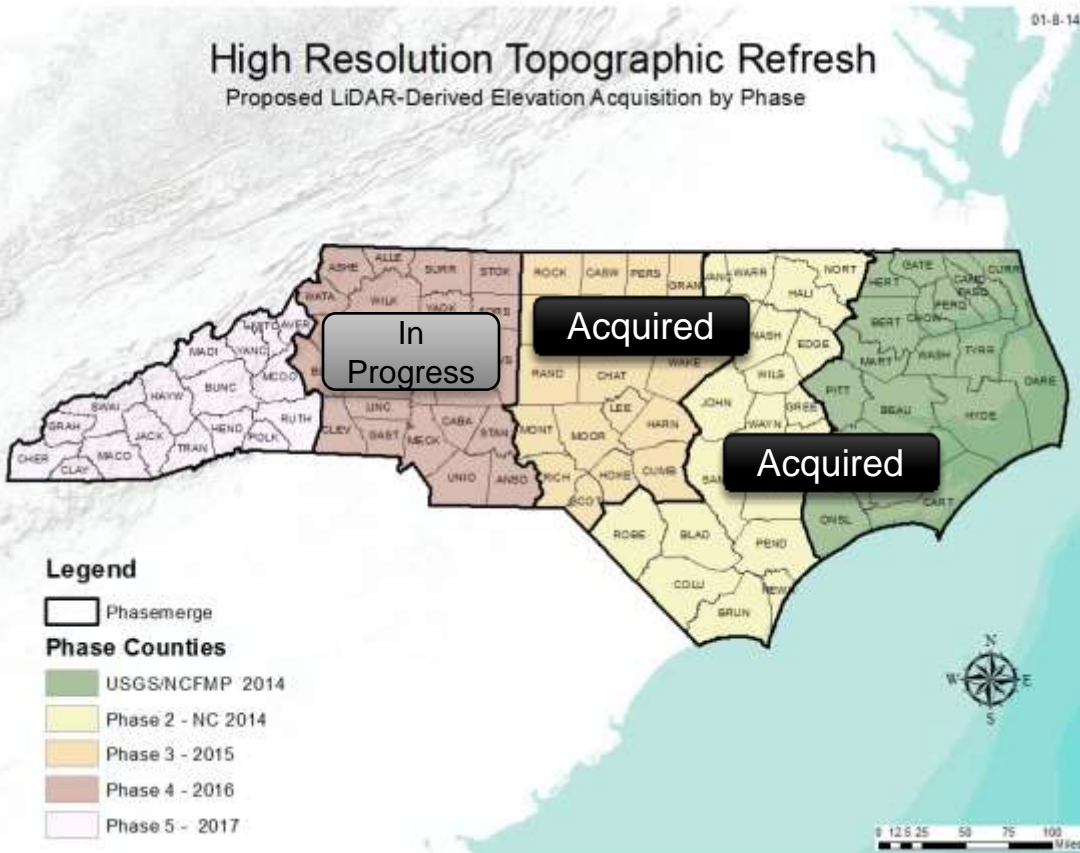
<http://fris.nc.gov/fris>



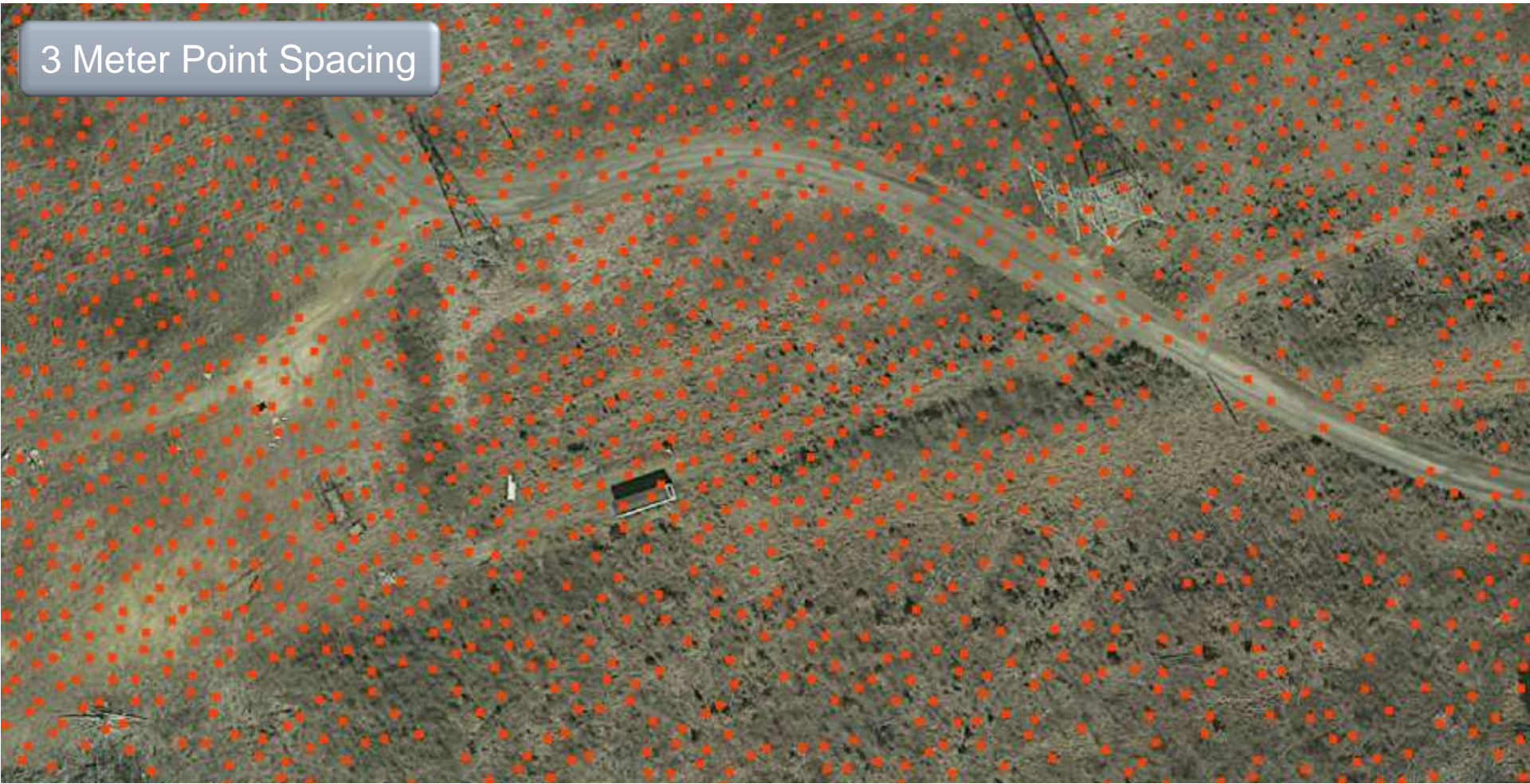
# STATEWIDE PHASES

## Original Plan

- The Plan put forward was a 5 phase 4 year plan
- Phase 1- USGS
- Phase 2- NC
  - Both occurred in 2014
- Phase 3 – NC (2015)
  - Wrapping up this phase
- Phase 4
  - Data collection in progress

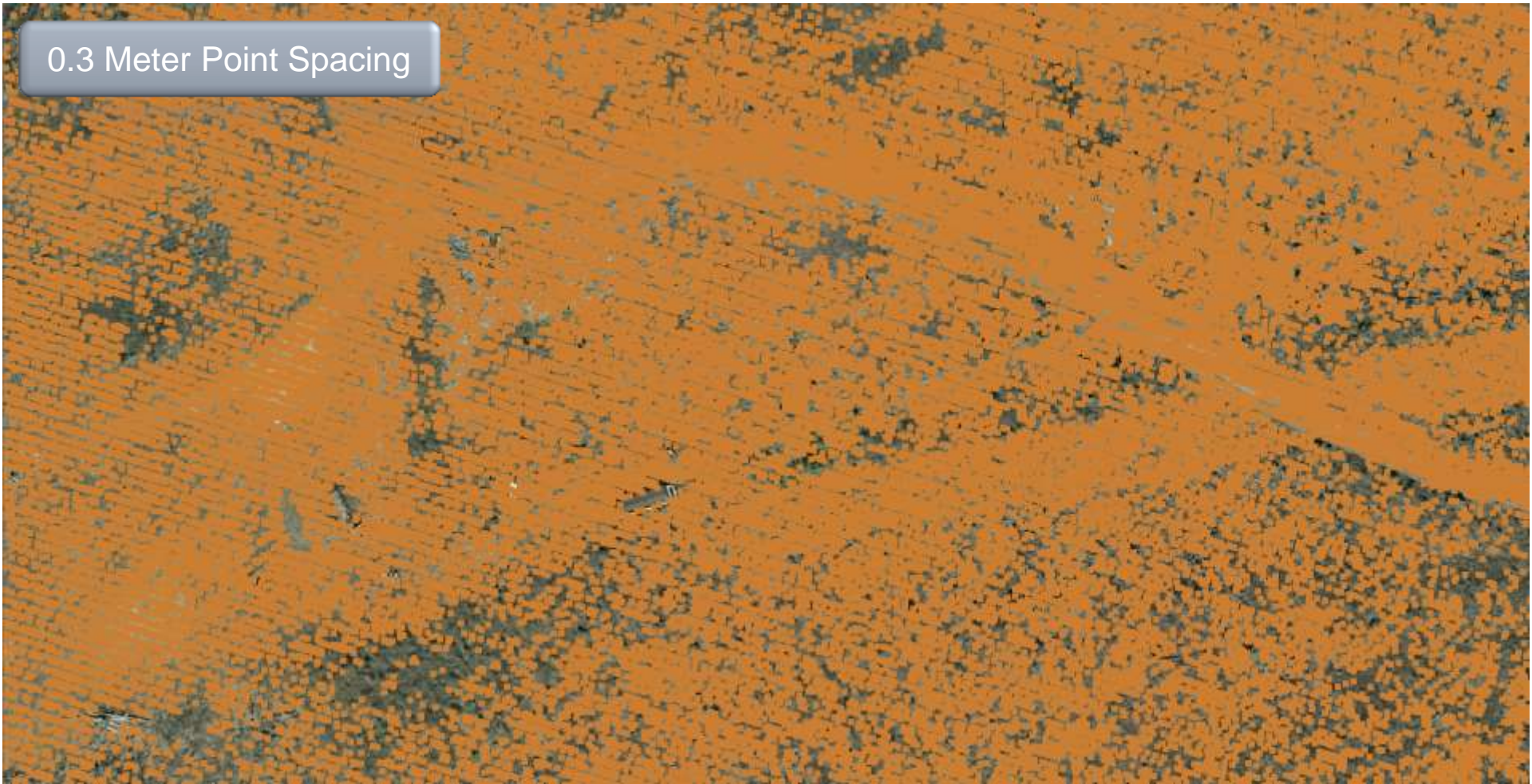


3 Meter Point Spacing



3 Meter Elevation Model (2003 NC LiDAR)

0.3 Meter Point Spacing

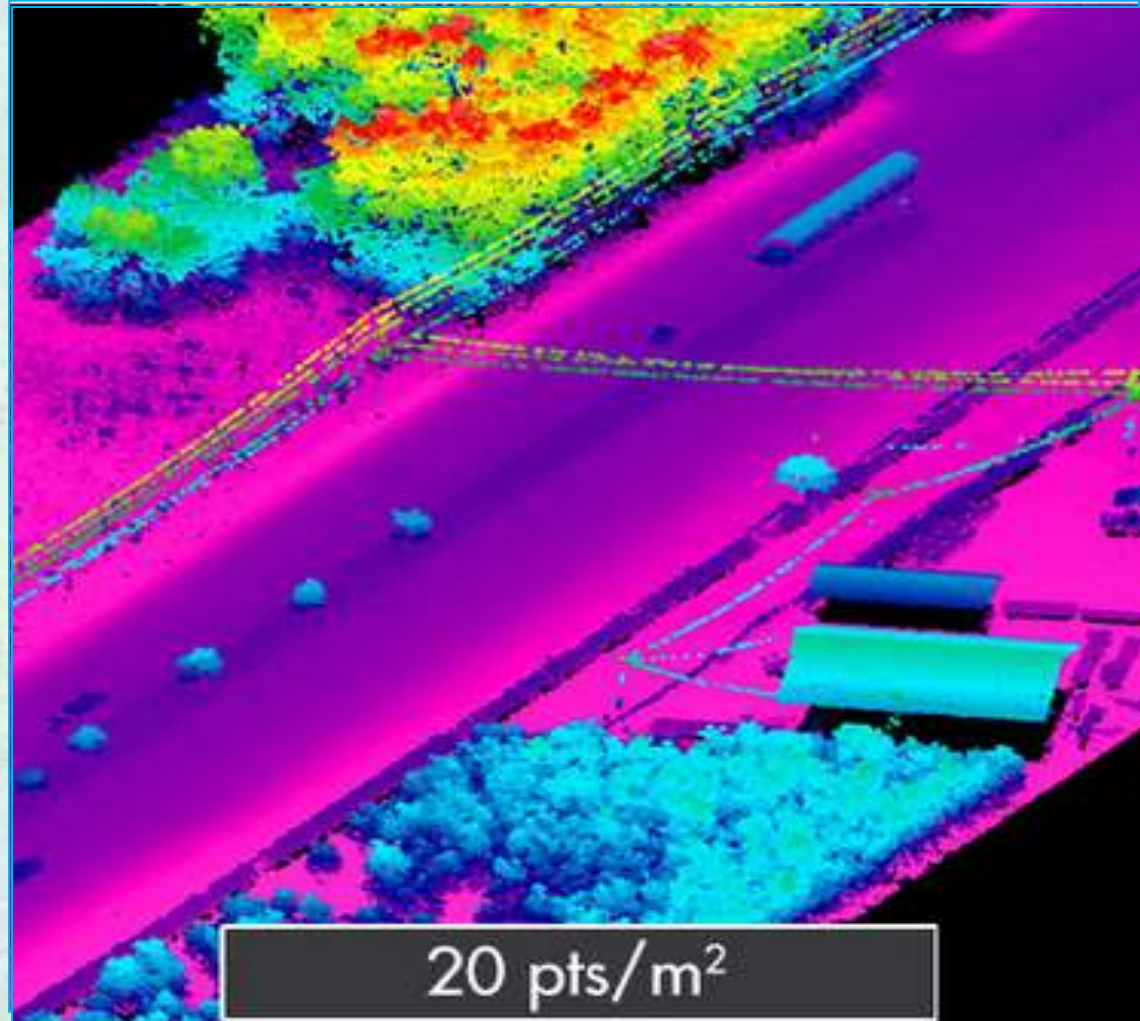


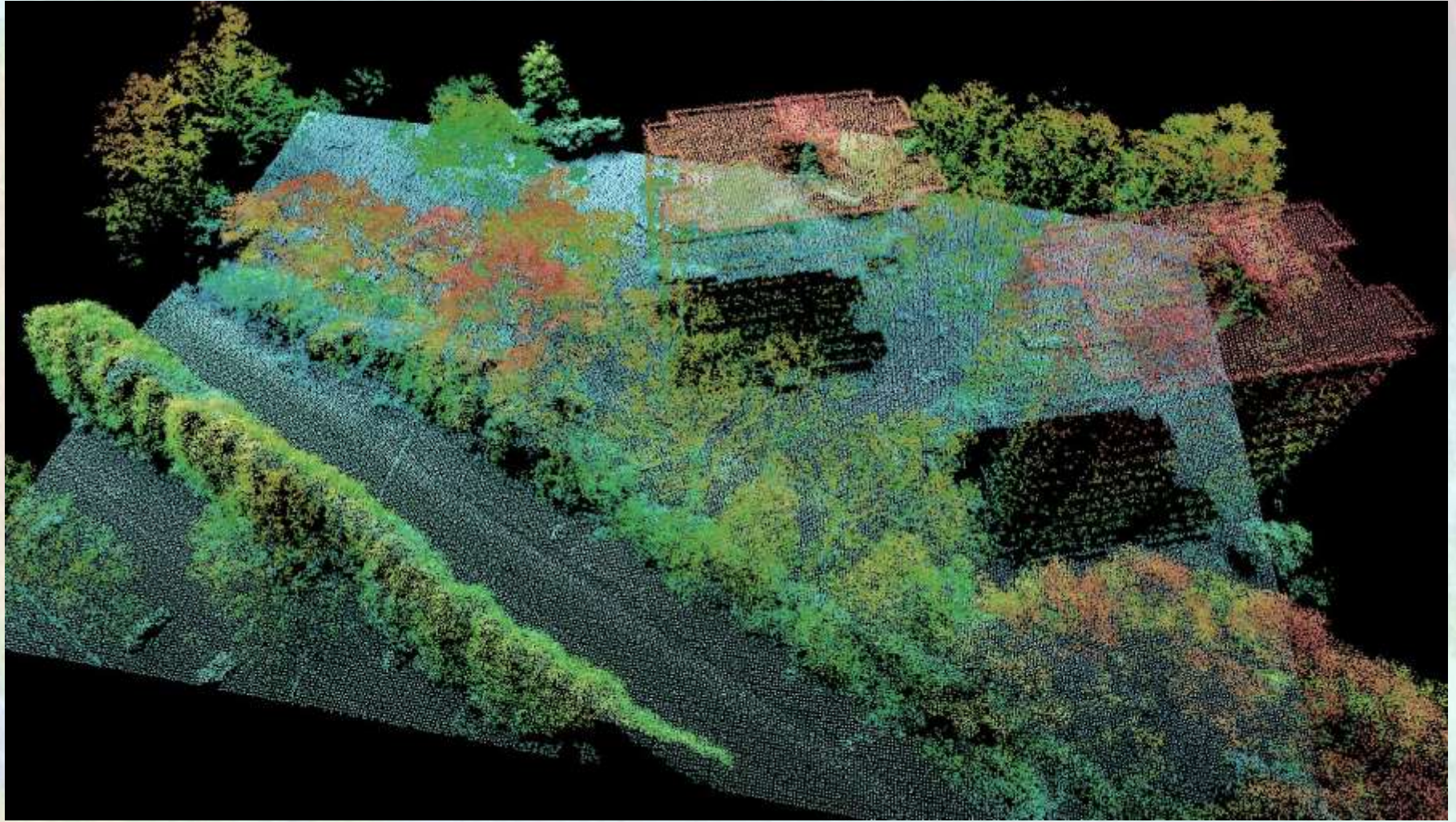
QL2 Elevation Model

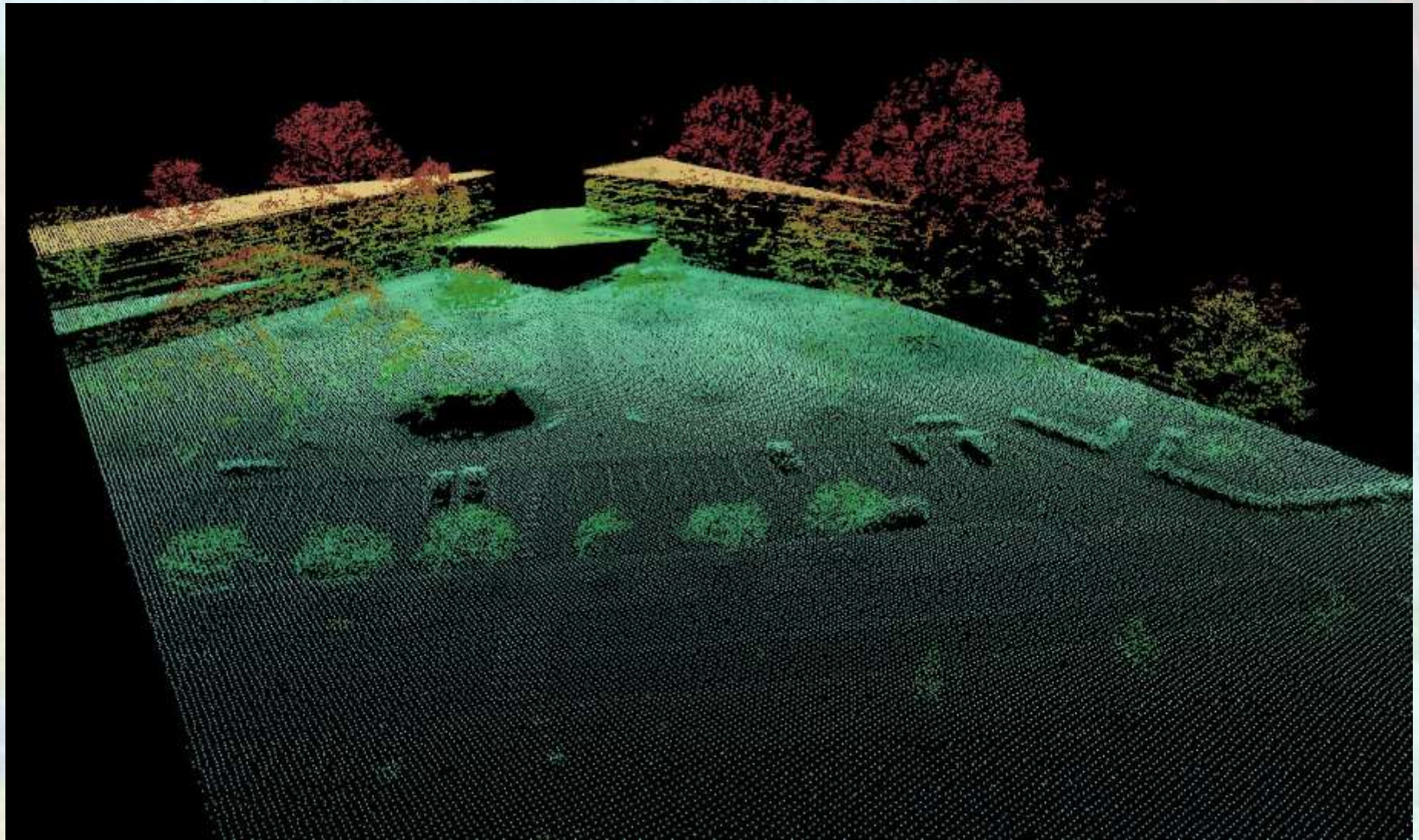
# 2016 Data Collection

## Geiger Mode Sensor

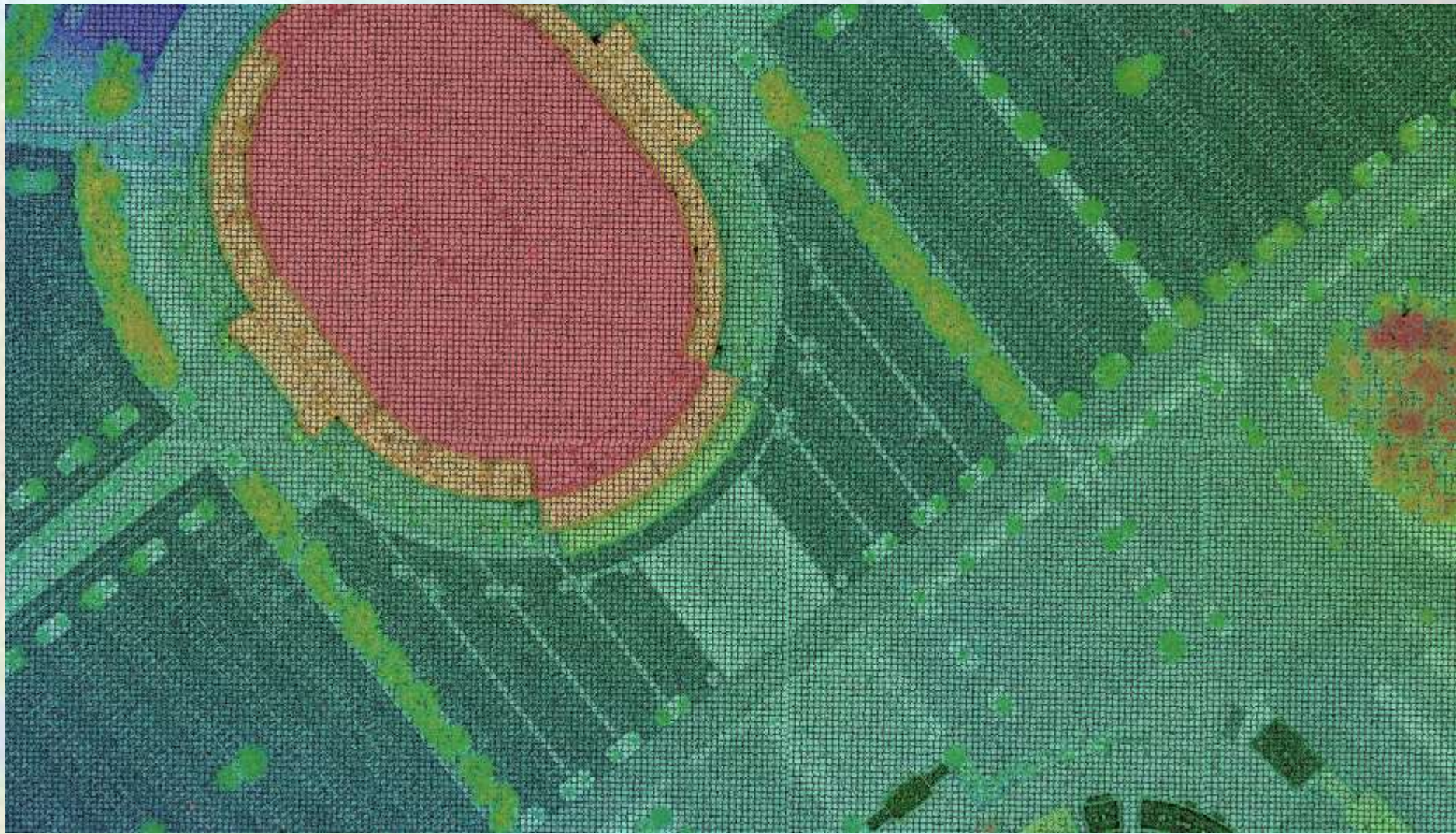
- Pilot test area in Mecklenburg County.
  - 20 points per square meter with nominal post spacing of 0.7 meters.
  - 8 ppm deliverable at same or reduced cost.
  - Data collected will support a 9.25 cm (3.36 inches) RMSEz.

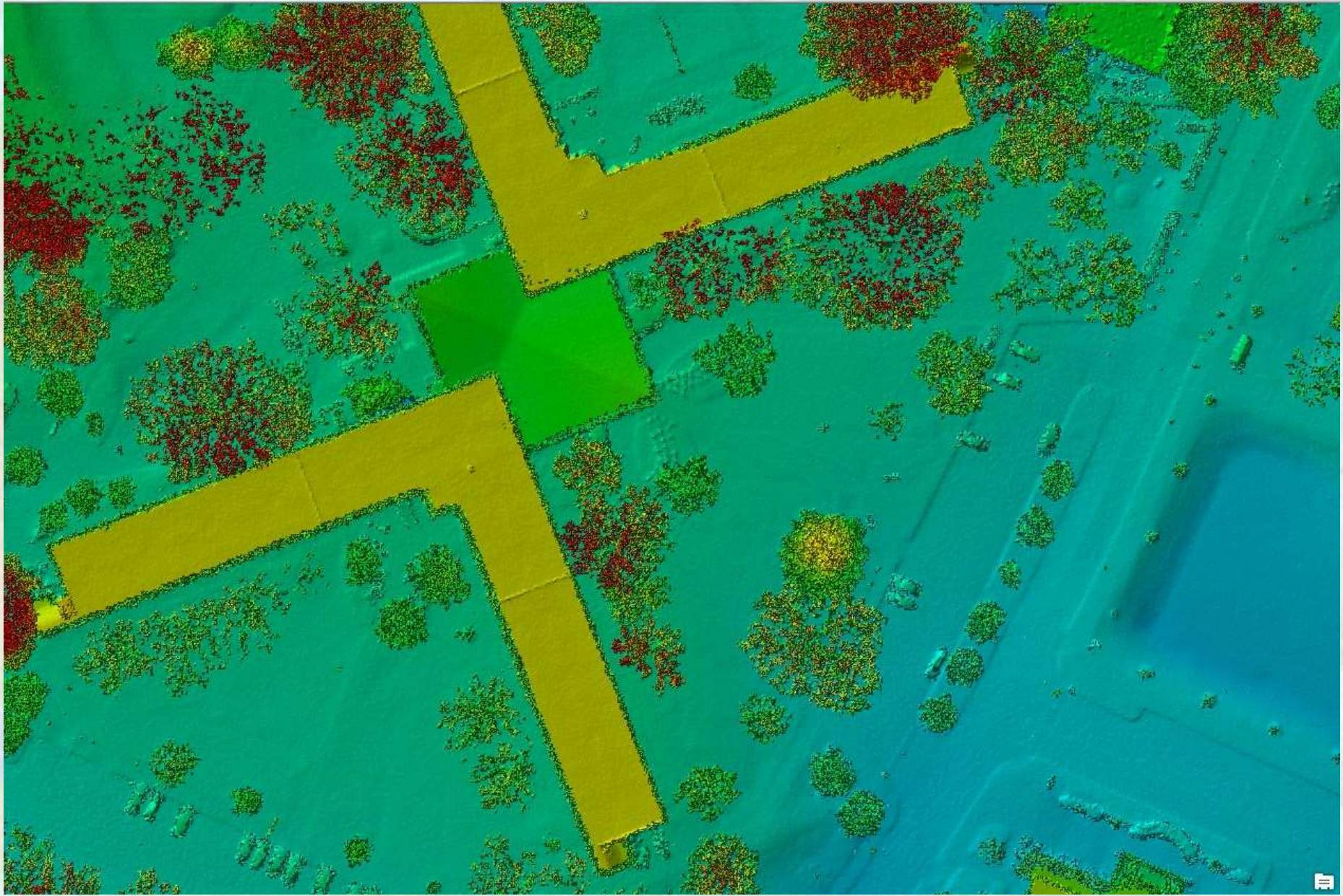




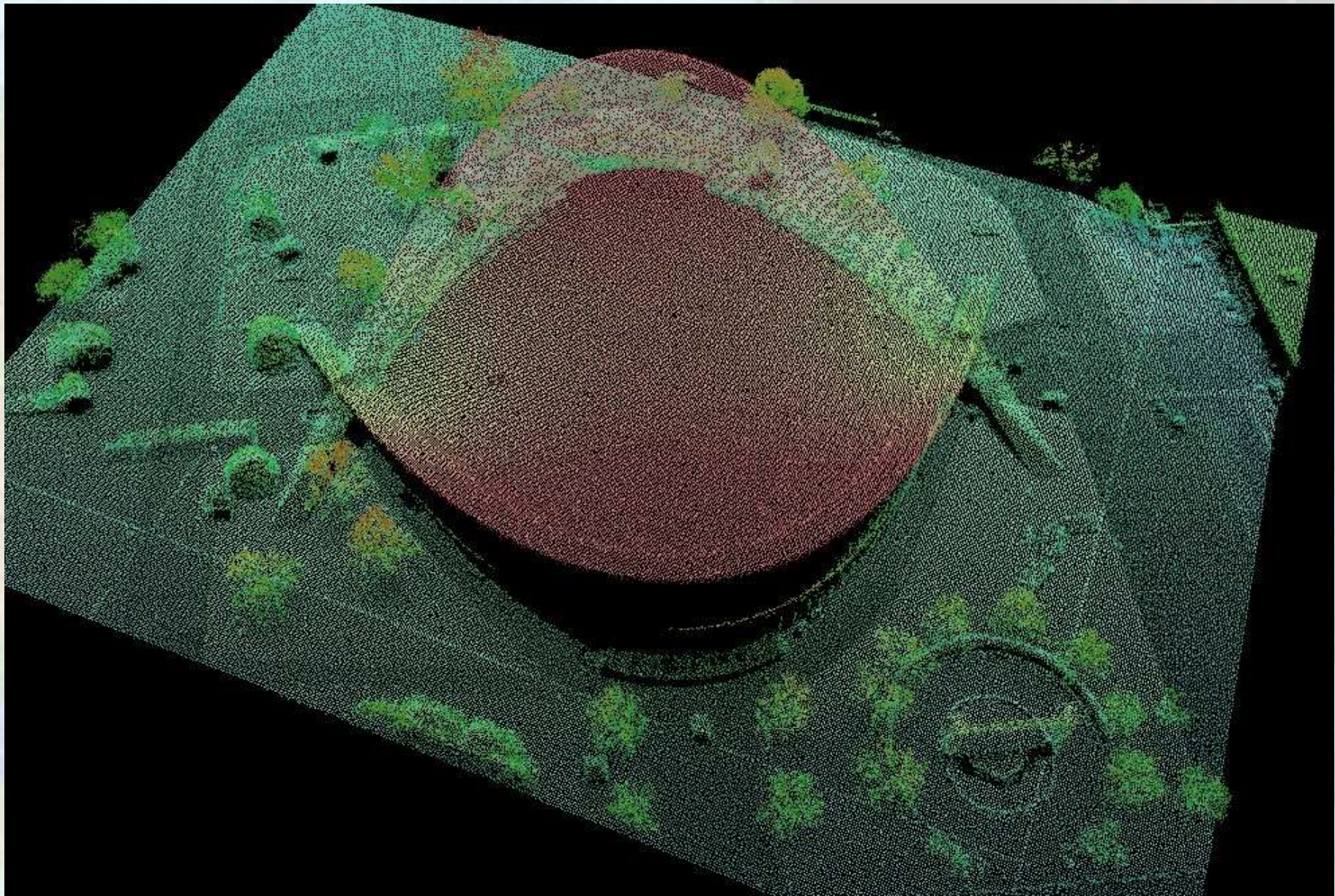


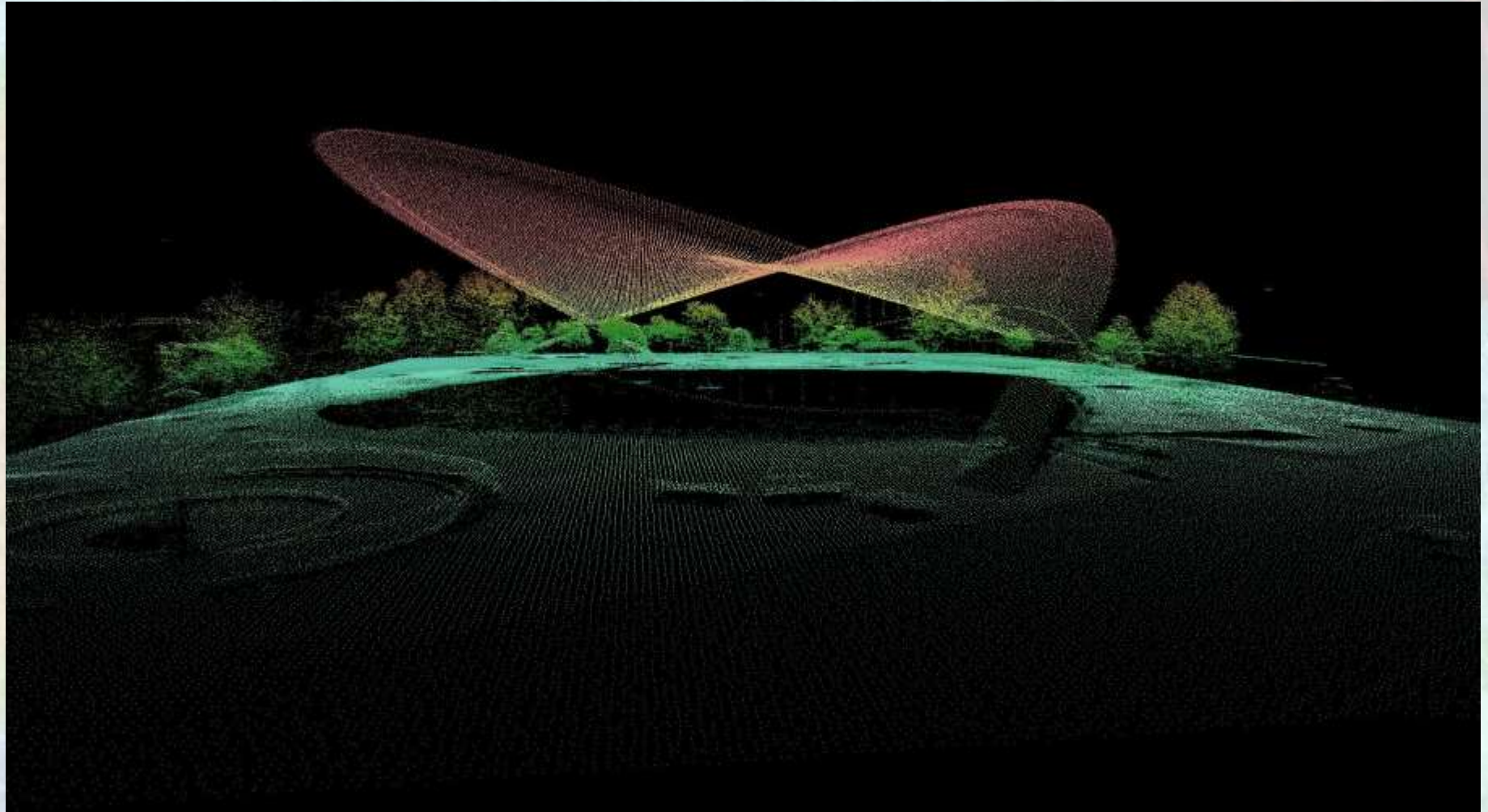


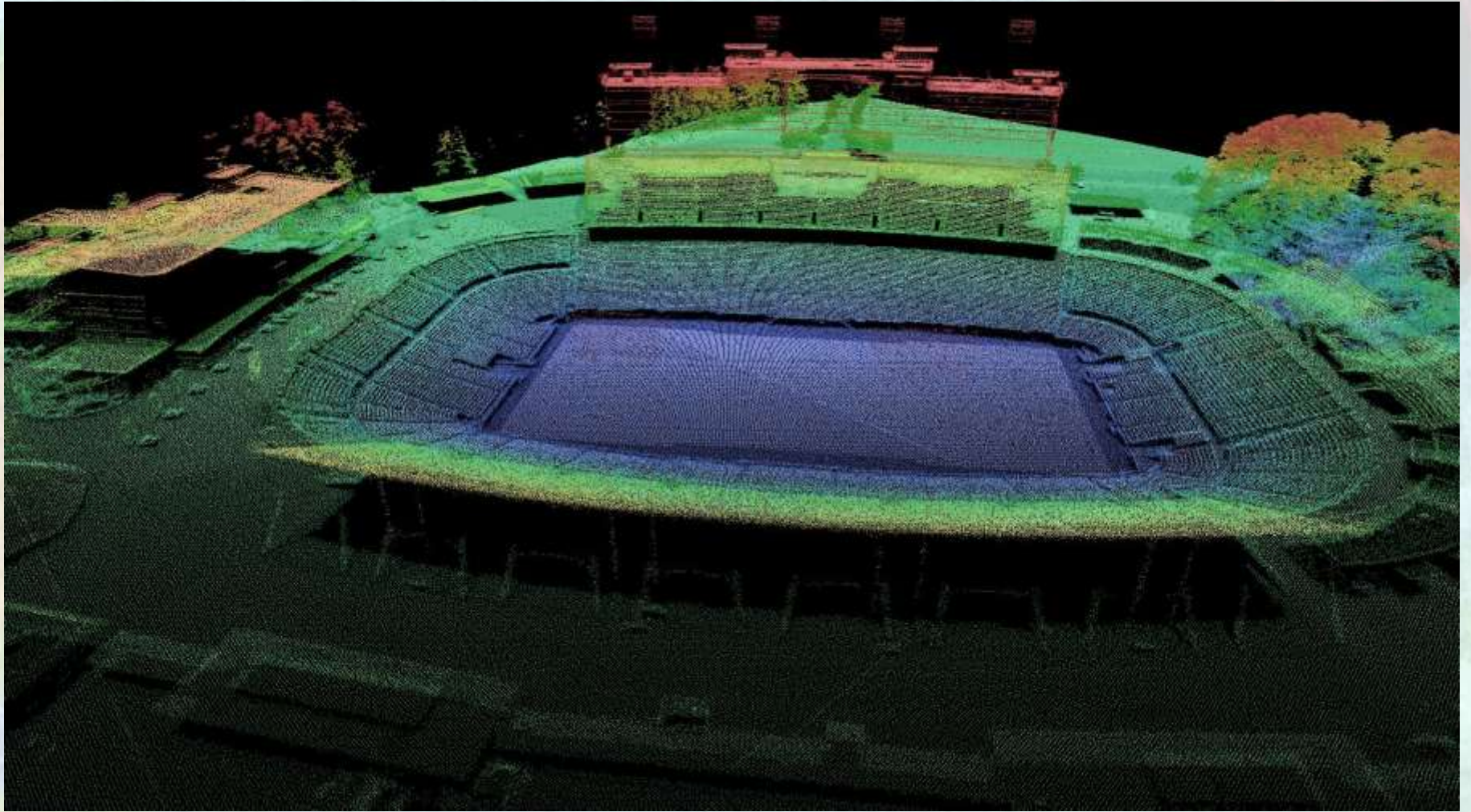


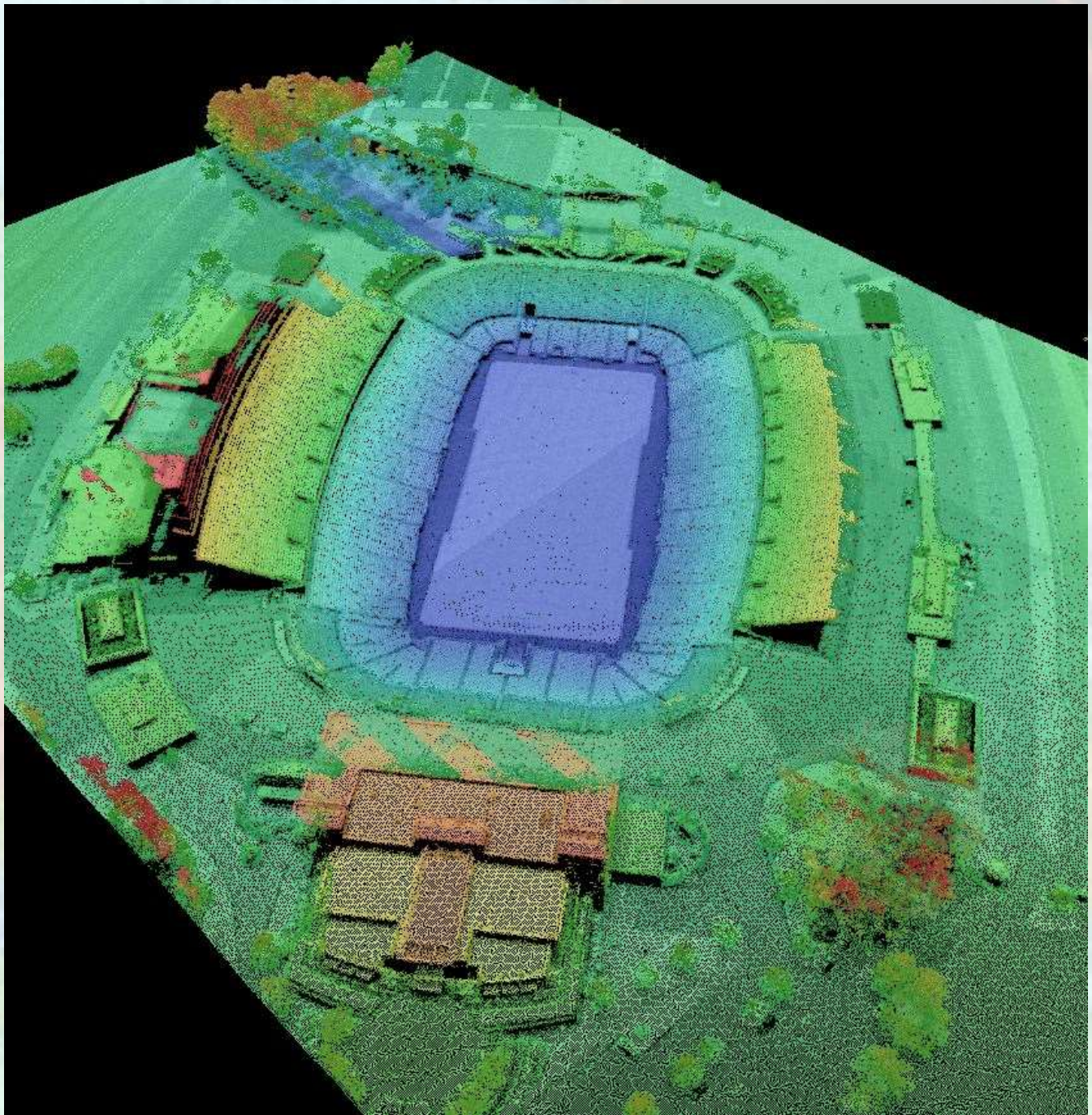














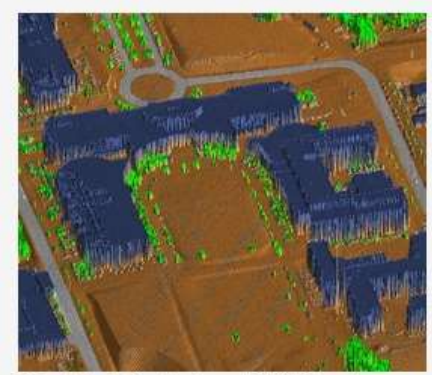
### Login with NCID

A North Carolina ID (NCID) is required.  
Don't have a NCID? Sign up [here](#).

NCID USER NAME:

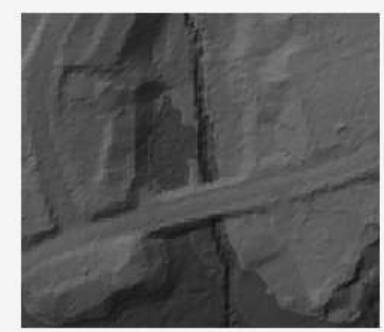
PASSWORD:

### Login here for QL2 LiDAR



This data is Quality Level 2 (QL2) and was collected at a spacing of approximately 2 points per meter. All returns classified data is available.

### Download legacy LiDAR at NC FRIS



All counties in North Carolina currently have legacy bare earth LiDAR from the initial statewide collection conducted from 2001-2005. This data was collected at a spacing of approximately 1 point per 3-4 meters.



This is a beta version of the Spatial Data Download site.

This is not the final version and you may encounter downtime, errors or bugs. If you do: [Email Your Feedback](#)

NCFMP will not be liable for any loss suffered by any party as a result of their use of the site. Any downloading of material is done at the users own risk and the user will be solely responsible for any loss that results from such activities.



# QL2 LIDAR DATA DOWNLOAD

To request an entire city or county, go to the [Large Data Request](#) page. Download legacy LiDAR at [NC FRIS](#)



Select Area

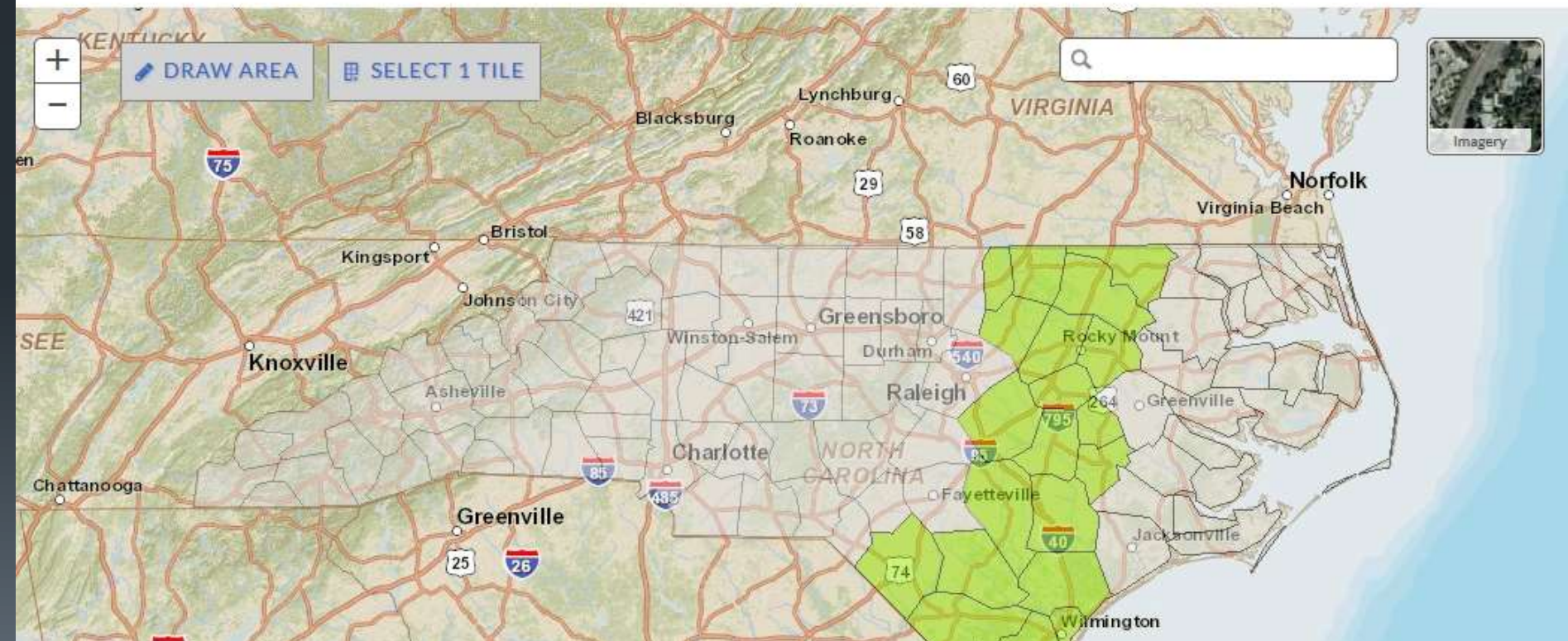


Select File Output



Submit Request

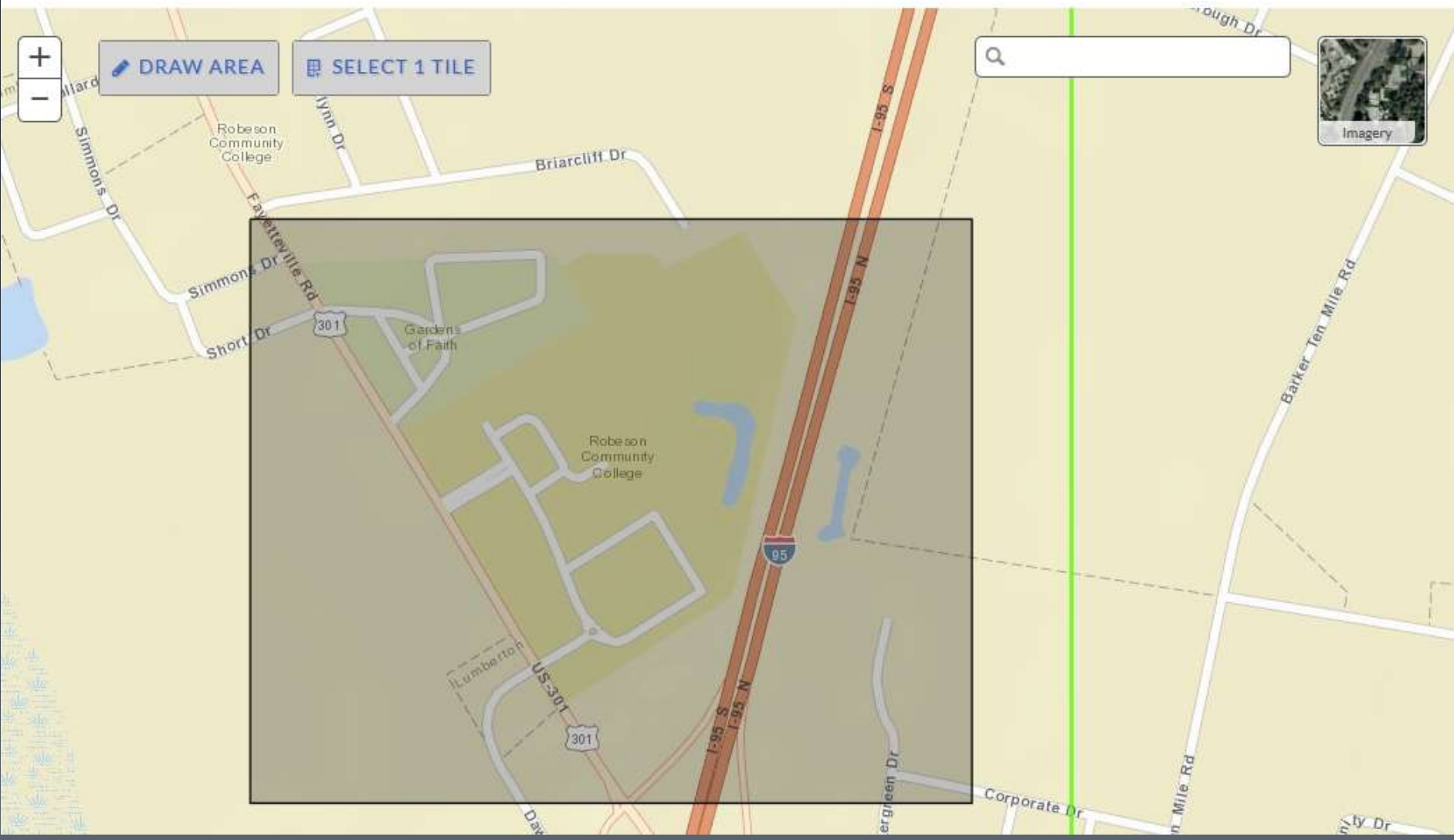
**i** QL2 LiDAR is available on the **green areas** on the map. To select an area crossing **multiple tiles**, click "Draw Area" and then draw a small box on the map. Areas must be less than 4 tiles.



❓ QL2 LiDAR is available on the **green areas** on the map. To select an area crossing multiple tiles, click "Draw Area" and then draw a small box on the map. Areas must be less than 4 tiles.

❓ Click Next to Continue

NEXT



## QL2 LIDAR DATA DOWNLOAD

To request an entire city or county, go to the [Large Data Request](#) page. Download legacy LiDAR at [NC FRIS](#)



Select Area



Select File Output



Submit Request

Select the classes of LiDAR you wish to include in your output **.LAS** file.

ALL CLASSES

This dataset contains all classes including ground, roads, vegetation and water

BARE EARTH

This dataset represents the earth's surface with all vegetation and human-made structures removed. The output .LAS file will contain classes 2 (Ground) and 13 (Roads).

INDIVIDUAL CLASSES

- Ground
- Strata/Vegetation
- Buildings
- Roads
- Bridges

PREVIOUS

SUBMIT REQUEST





## QL2 LIDAR DATA DOWNLOAD

To request an entire city or county, go to the [Large Data Request](#) page. Download legacy LiDAR at [NC FRIS](#)



Select Area



Select File Output



Submit Request

**Your request has been submitted!**

Jobs are processed in the order they are received and may require up to 24 hours for processing. You will receive an email from [rmpclipandship@ncdps.gov](mailto:rmpclipandship@ncdps.gov) when your files are ready for download. Please make sure to add [rmpclipandship@ncdps.gov](mailto:rmpclipandship@ncdps.gov) to your safe sender list.

[SUBMIT ANOTHER REQUEST](#)

[VIEW REQUEST HISTORY](#)



**This is a beta version of the Spatial Data Download site.**

This is not the final version and you may encounter downtime, errors or bugs. If you do: [Email Your Feedback](#)

NCFMP will not be liable for any loss suffered by any party as a result of their use of the site. Any downloading of material is done at the users own risk and the user will be solely responsible for any loss that results from such activities.

**SPATIAL**  
Data Download

NC Floodplain Mapping Program  
4105 Reedy Creek Drive  
Raleigh, NC 27607

Mailing Address  
4218 Mail Service Center  
Raleigh, NC 27699-4218

Phone: (919) 715-5711



## REQUEST SUMMARY

Request Summary

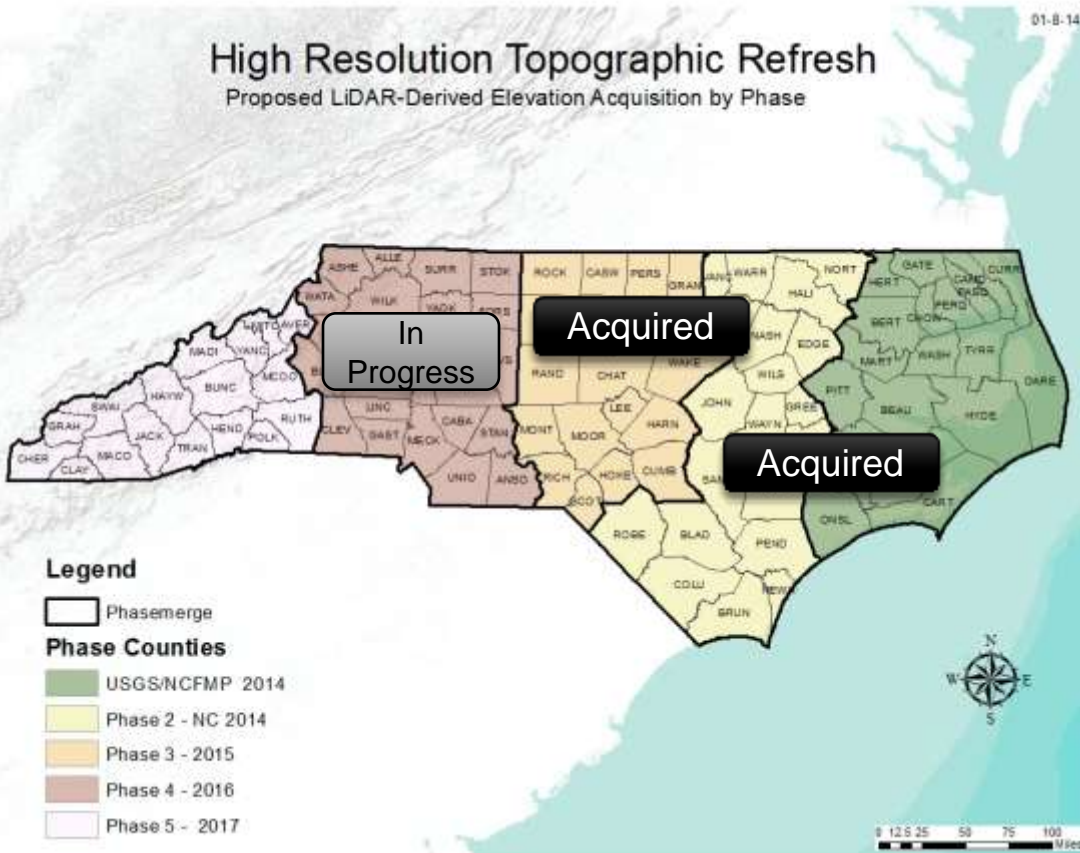
- Click the column names to sort your requests.
- Pending requests may take up to 24 hours to process. You will receive an email when your data is ready for download.
- Click the Download button to access your completed data request files.

Status	ID	Date	Type	
Pending	61	3/11/2015 9:30:40 AM	Rectangle	
Complete	32	3/2/2015 1:54:51 PM	Rectangle	<a href="#">↓ DOWNLOAD</a>

# STATEWIDE PHASES

## Original Plan

- The Plan put forward was a 5 phase 4 year plan
- Phase 1- USGS
- Phase 2- NC
  - Both occurred in 2014
- Phase 3 – NC (2015)
  - Wrapping up this phase
- Phase 4
  - Data collection in progress



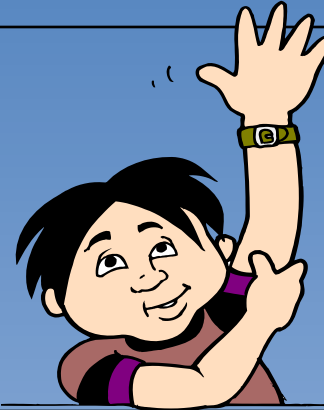
# Questions?

Gary W. Thompson, PLS

Office: 919-733-3836

Direct: 919-948-7844

Email: [gary.thompson@ncdps.gov](mailto:gary.thompson@ncdps.gov)



## Mailing address:

Gary W. Thompson, PLS  
NC Geodetic Survey  
4298 Mail Service Center  
Raleigh, NC 27699-4298

## Building (shipping) address:

Gary W. Thompson, PLS  
NC Geodetic Survey  
Bowers Building  
NC National Guard complex  
4105 Reedy Creek Rd  
Raleigh, NC 27607

