

# CROWDSOURCED DATA

---

NGAC Subcommittee Report

September 1, 2015

Shepherdstown, WV

# AGENDA

- Activities to date
- Preview of the Toolkit for crowd-sourcing and citizen science
- Discussion

# MICHAEL GOODCHILD



Hide detail



## Eastern tip of Uluru



Uploaded on May 20, 2006

by III

The base circumference of [Uluru](#) is about 9km – I walked solo around the rock in the early morning, stopping to photograph the long shadows and listen to the morning bird song. Uluru-Kata Tjuta National Park, Australia, 2006

Australia, Uluru, AyersRock, nationalpark...

Anyone can see this location

View photo page

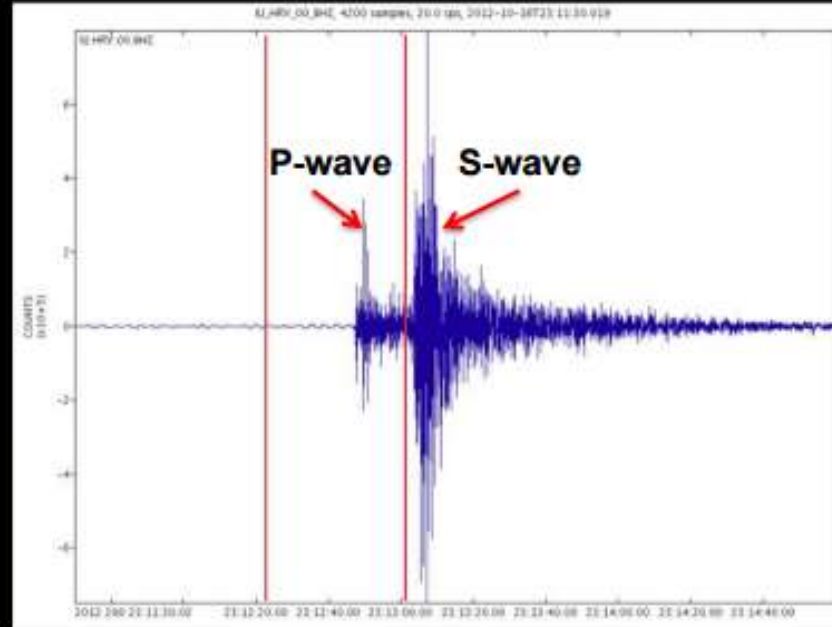
1 of 1

# SOPHIA LIU



## Tweet Earthquake Dispatch

Adam Dziewonski Observatory, Oak Ridge, MA, USA  
(GSN) IRIS/USGS, Harvard University  
142 km from Epicenter



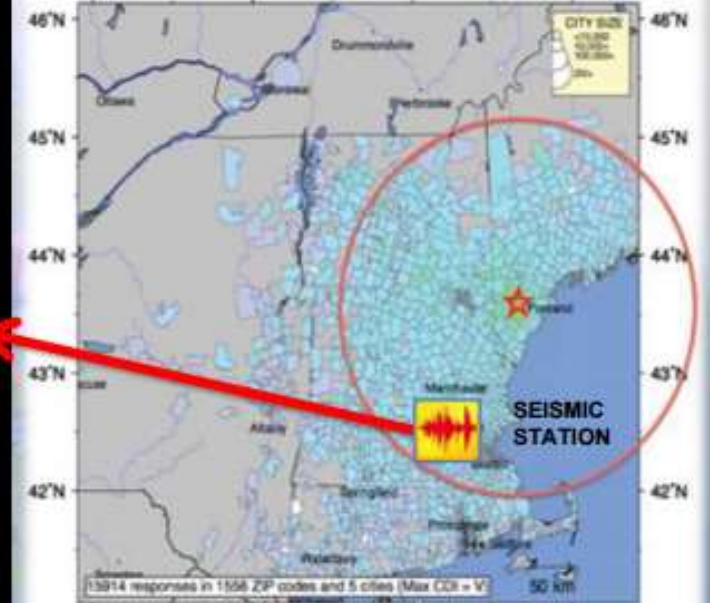
**Origin Time**  
**23:12:23**

**TED Alert Time**  
**23:13:02**

Location of the P-wave when Twitter  
alert was received in Golden

USGS Community Internet Intensity Map  
MAINE

Oct 18 2012 07:12:22 PM local 43.5818N 70.6758W M4.0 Depth: 6 km IDus000d790



	I	II	III	IV	V	VI	VII	VIII	IX	X+
Intensity	Not felt	Weak	Light	Moderate	Strong	Very strong	Severe	Violent	Extreme	
Damage	None	None	None	Very light	Light	Moderate	Moderate/Heavy	Heavy	Very Heavy	

Processed Wed Oct 17 23:28:37 2012

# DENISE ROSS



## Crowdsourcing scoring of property condition



### DESIGN CHALLENGES

Large scale (149,000 parcels)

Cost-effective enough to repeat

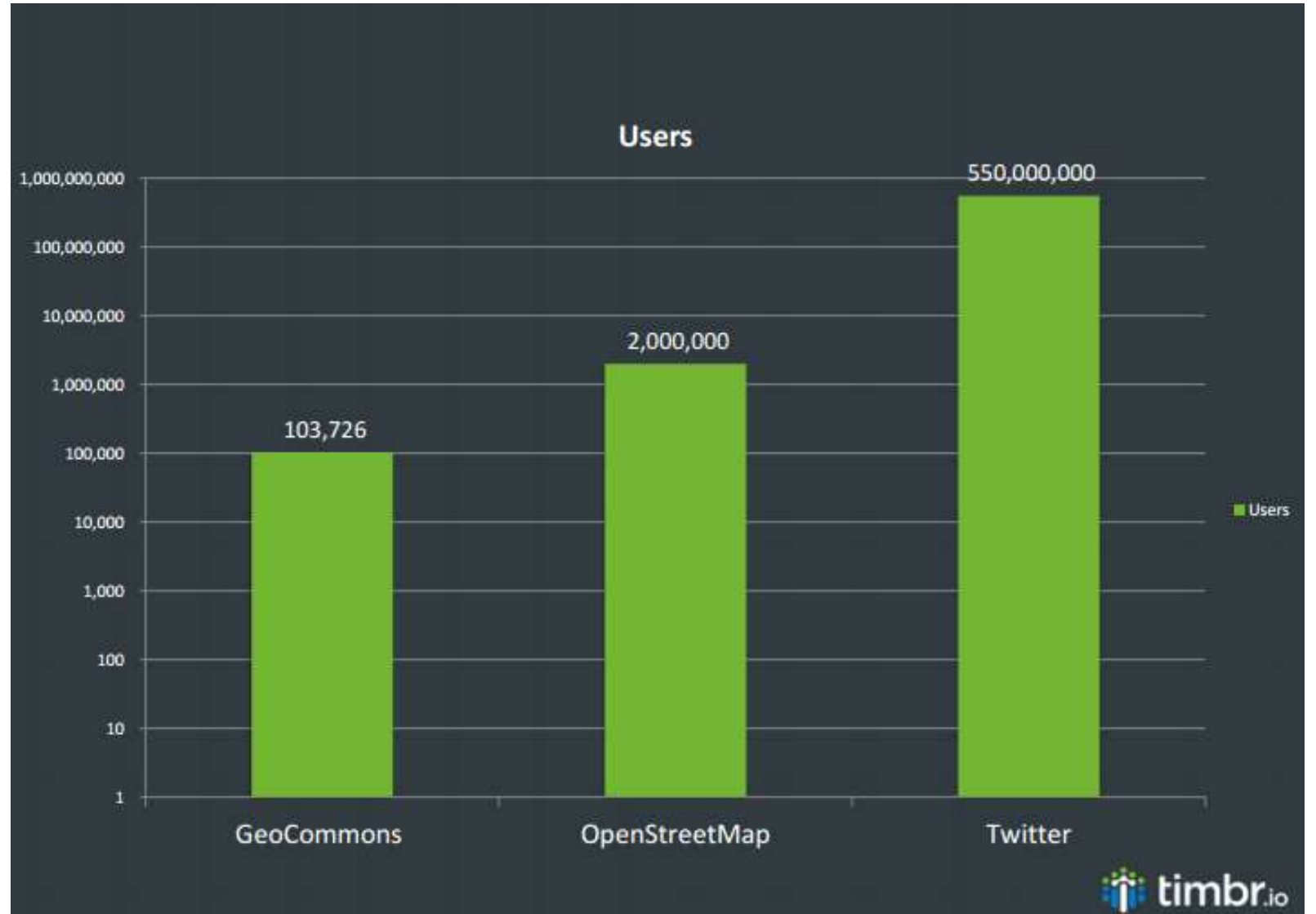
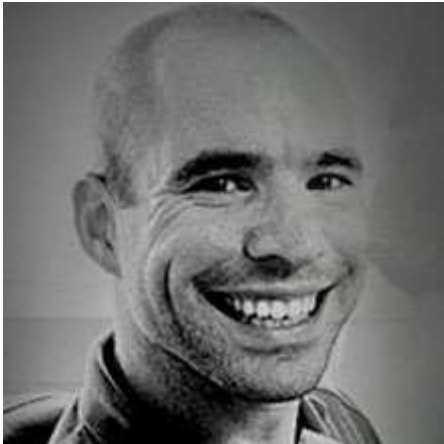
Limit boots-on-ground collecting data

Reduce scoring bias between nbhds

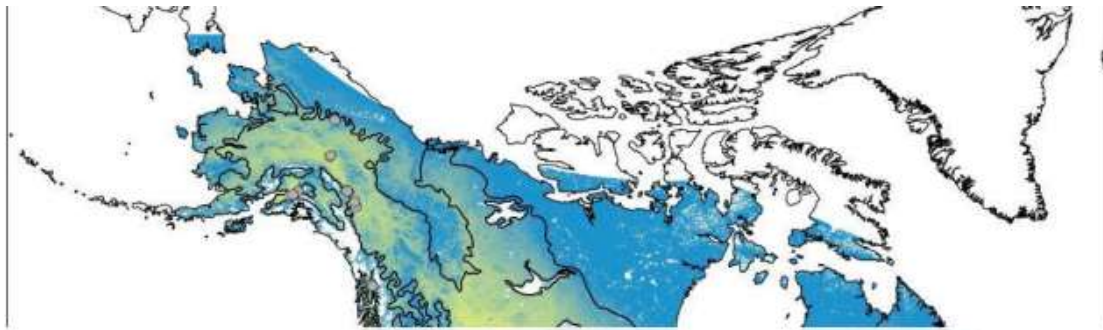
Field Name	Status
Vacant/Built	Building
Overgrown	False
Bldg Use	Residential
Bldg Condition	Good
Occupancy	Occupied
Elevation Type	Elevated – crawl space



# SEAN GORMAN

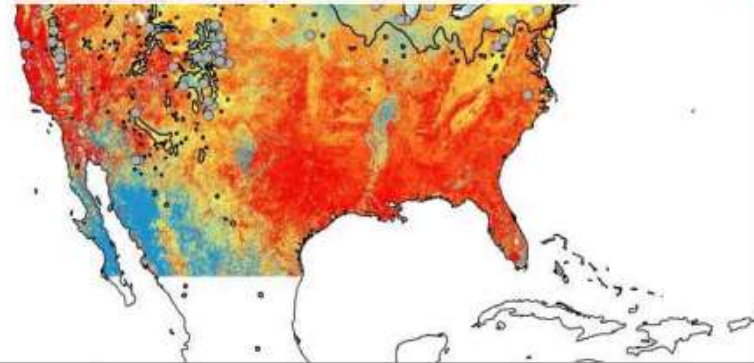


# LEA SHANLEY



In 2014, **Nature's Notebook** volunteers recorded more than 1 million observations on plants and animals that scientists use to analyze environmental change.

**Greenness Onset DOY**  
High : 160  
Low : 60



Poplar range  
NPN observations

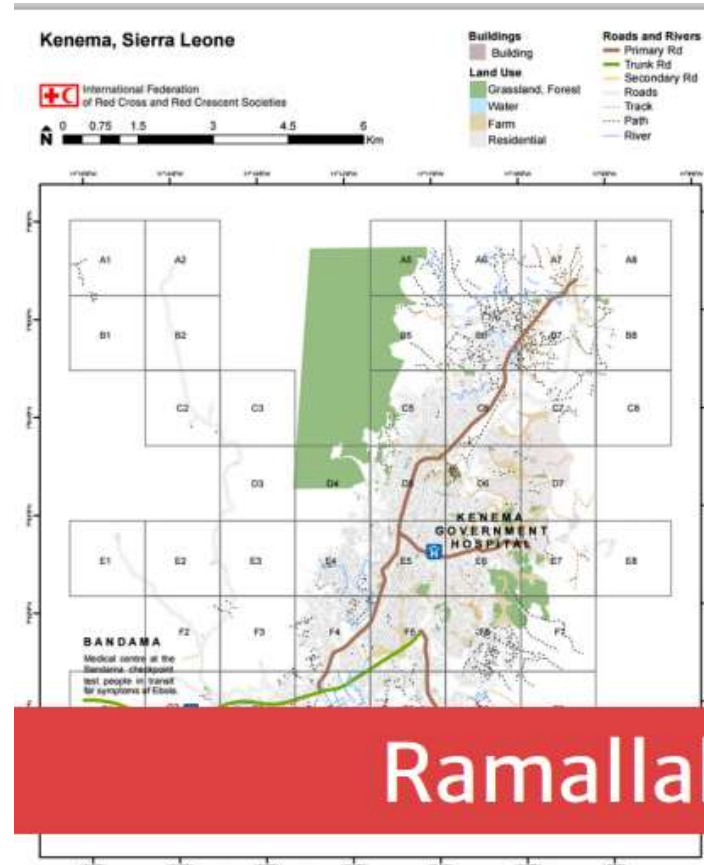
# ALEX BARTH



A screenshot of the TriMet Trip Planner web application. The interface is titled "TRI MET Trip Planner" and features a "Plan a Trip" section on the left. This section includes input fields for "From" and "To", a "When:" section with "Depart" selected, a time of "9:16 am", and a date of "6/10/2015". Below these are dropdown menus for "Travel by:" (set to "Transit"), "Show me the:" (set to "Quick trip"), and "Maximum walk:" (set to "1/2 mile"). A "Plan Your Trip" button is located at the bottom of this section. The right side of the interface is a map of Portland, Oregon, showing various transit routes in different colors (blue, red, green, yellow) and street names. The city name "Portland" is prominently displayed on the map. At the bottom left of the map area, there is a scale bar showing 2 km and 1 mi, and a location search box with the coordinates "45.5174".



# MIKEL MARON



Produced: 29/07/2014  
Sources: OpenStreetMap (29th July), Africa Albers Equal Area Conic Projection, WGS 1984

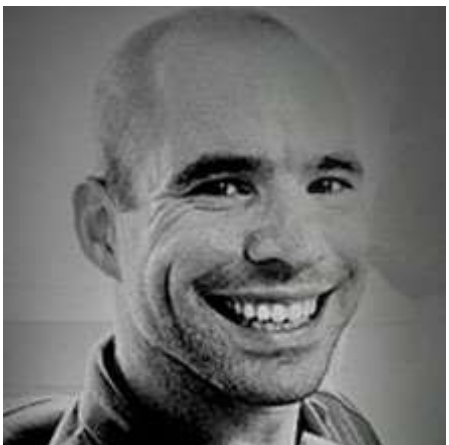


Ramallah #Map4Ebola

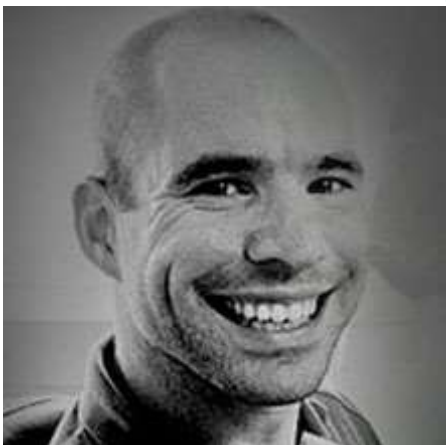
# TALBOT BROOKS & JULIE SWEETKIND- SINGER



The screenshot displays a web-based GIS application interface. At the top, there are navigation tabs: FILTERS, REPORTS, NEWS, PICTURES, VIDEO, and TODD. A 'VIEWS' dropdown menu is set to 'CLUSTERS'. Below the navigation is a map of a city area with two red circular markers containing the numbers '35' and '374'. The map includes a scale bar (Scale = 1:54K), coordinates (-72.36436, 18.66862), and the EPSG 980913 projection. Below the map is a 'TIMELINE OF EVENTS' section with a date range from 'Jan 12 2010' to 'Oct 15 2010' and a 'PLAY' button. A vertical axis on the left of the timeline is labeled with 100, 200, and 300. To the right of the map is a 'CATEGORY FILTER' panel with a list of categories, each with an icon: 1. URGENCES | EMERGENCY (exclamation mark), 2. URGENCES LOGISTIQUES | VITAL LINES (truck and lightning bolt), 3. PUBLIC HEALTH (caduceus), 4. MENACES | SECURITY THREATS (warning sign), 5. INFRASTRUCTURE DAMAGE (house with lightning bolt), 6. NATURAL HAZARDS (cloud and lightning bolt), 7. SECOURS | SERVICES AVAILABLE (plus sign), and 8. AUTRE | OTHER (diamond). Below the filter panel is a 'How to Report' section with contact information: SMS/Text Local: 4636, SMS/Text International: +44 762 480 2524, Email: hais@sushahid.com, and Web Form: Submit Report. At the bottom right is the Delta State University logo with the tagline 'Join in. Stand out.' and the text 'Geospatial Information Technology'.







# THE FEDERAL COMMUNITY OF PRACTICE

The screenshot shows the EPA website's navigation bar with the EPA logo and the text "United States Environmental Protection Agency". Language options include Español, 中文: 繁體版, 中文: 简体版, Tiếng Việt, and 한국어. A search bar is labeled "Search EPA.gov". The main navigation menu includes "Learn the Issues", "Science & Technology", "Laws & Regulations", and "About EPA". The page title is "Innovation" with "Contact Us" and "Share" links. A breadcrumb trail reads "You are here: EPA Home » Innovation » Federal Community of Practice for Crowdsourcing and Citizen Science". The main heading is "Federal Community of Practice for Crowdsourcing and Citizen Science". The introductory text states: "The Federal Community of Practice on Crowdsourcing and Citizen Science meets monthly to share lessons learned and develop best practices for designing, implementing, and evaluating crowdsourcing and citizen science initiatives." Two highlighted sections are visible: "Mission Statement" and "Scope of the Community".

EPA United States Environmental Protection Agency

Español | 中文: 繁體版 | 中文: 简体版 | Tiếng Việt | 한국어

Learn the Issues | Science & Technology | Laws & Regulations | About EPA

Search EPA.gov

Innovation [Contact Us](#) [Share](#)

**You are here:** [EPA Home](#) » [Innovation](#) » [Federal Community of Practice for Crowdsourcing and Citizen Science](#)

## Federal Community of Practice for Crowdsourcing and Citizen Science

The Federal Community of Practice on Crowdsourcing and Citizen Science meets monthly to share lessons learned and develop best practices for designing, implementing, and evaluating crowdsourcing and citizen science initiatives.

### Mission Statement

As affiliates of federal agencies, we seek to expand and improve the U.S. government's use of crowdsourcing, citizen science and similar public participation techniques for the purpose of enhancing agency mission, scientific, and societal outcomes.

### Scope of the Community

We use the following definitions as guidelines for the scope of the group. We acknowledge that the activities below overlap significantly. We focus on crowdsourcing and citizen science, and the

**EPA Innovation Home**

- Innovation News
- Research Innovation
- Technology Innovation
- Water Innovation and Technology
- Sustainable Practices Innovation
- Innovation in Your Community
- Prize Competitions
- Innovation Awards
- Ways to Collaborate with EPA
- Innovative Environmental Protection Tools
- Innovation Across the Federal Government

# OPEN INNOVATION

---

**Open innovation** is a paradigm that suggests that organizations can and should solicit contributions from external volunteers.

# DO-IT-YOURSELF (DIY) / MAKING

---

- **Do-it-yourself (DIY) / Making** is a method of creating, modifying, or repairing something without the aid of professional experts.