



2020 Census Overview and Update

Presentation for the National Geospatial Advisory Committee

September 5, 2019

Deirdre Dalpiaz Bishop, Chief, Geography Division

Shape
your future
START HERE >

United States[®]
Census
2020

2020 Census

Purpose

To conduct a census of population and housing and disseminate the results to the President, the States, and the American People



Apportion representation among states as mandated by Article 1, Section 2 of the U.S. Constitution:

Representatives and direct Taxes shall be apportioned among the several States which may be included within this union, according to their respective Numbers ...

The actual Enumeration shall be made within three Years after the first Meeting of the Congress of the United States, and **within every subsequent Term of ten years**, in such Manner as they shall by Law direct.

Primary Uses of Decennial Census Data:

- Apportion representation among states as mandated by Article 1, Section 2 of the U.S. Constitution.
- Draw congressional and state legislative districts, school districts, and voting precincts.
- Distribute more than \$675 billion federal dollars annually to states.
- Inform federal, tribal, state, and local government planning decisions.
- Inform business and nonprofit organization decisions (e.g., where to locate, size of the market).

2020 Census

A Complete and Accurate Count of the Population and Housing



2020 Census

Establish Where to Count—Address Frame Development



Development for the 2020 Census Master Address File (MAF) started with the 2010 Census Base.

U.S. Postal Service (USPS) Delivery Sequence File (DSF)

- Updates from USPS twice per year.
- 5.5 million new addresses.

Geographic Support System Partnership Programs

- Support and maintenance of the geographic and cartographic infrastructure.
- Partnerships with tribal, state and local governments.
 - Total number of addresses received 134,087,711.
 - 106,729,993 (79.6 percent) were accepted.
 - 106,208,686 (99.5 percent) matched to the MAF.
 - 521,307 of these addresses were added to the MAF.
 - Total number of distinct XY coordinates received 125,790,653.
 - 75,152,060 new coordinates added.

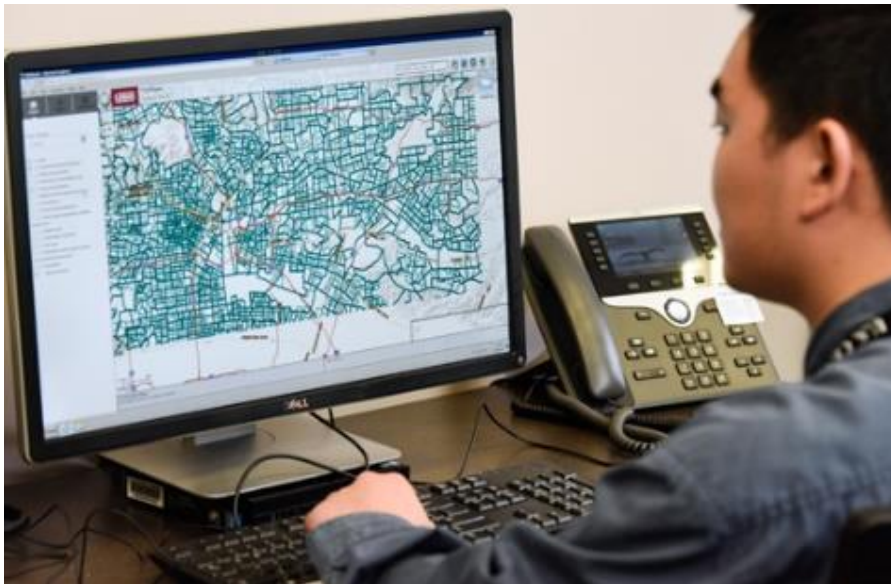
Boundary and Annexation Survey

- Annual survey to collect information about selected legally defined geographic areas.
 - 2019—33,788 responses from 39,148 eligible governments (86.30 percent).
 - 4,334 with changes/29,454 with no changes.

2020 Census

Establish Where to Count—In-Office Address Canvassing

Development for the 2020 Census Master Address File (MAF) started with the 2010 Census Base.

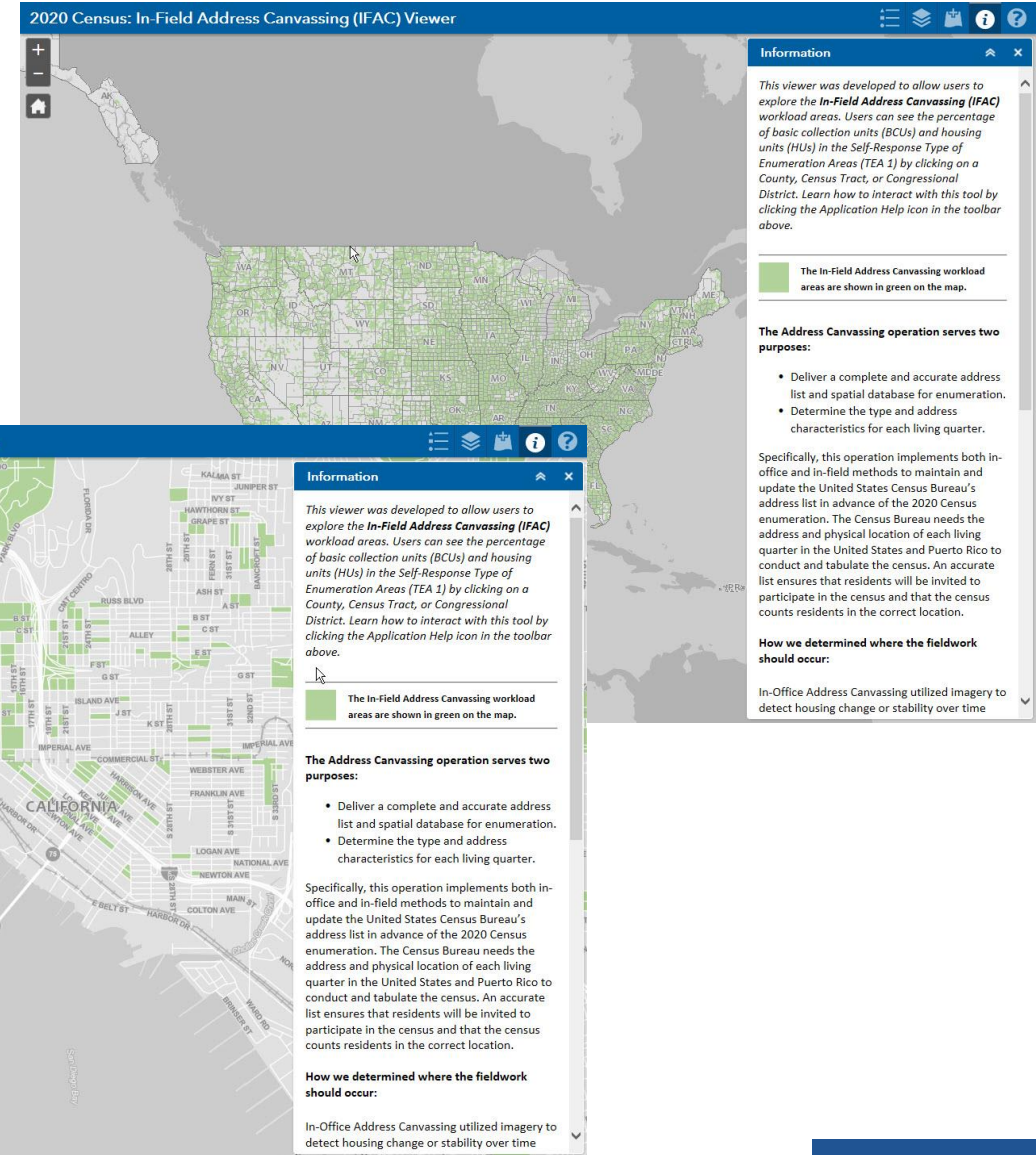


In-Office Address Canvassing

- Update the address list and maps based on data from multiple sources, including the U.S. Postal Service, tribal, state, and local governments and satellite imagery.
- Conducted review of all 11,155,486 blocks in the U.S.
 - Current Status:
 - Active 1,053,910 blocks (9.5 percent).
 - Passive 9,682,882 blocks (85.8 percent).
 - On Hold 153,686 blocks (1.4 percent).
 - Triggered 265,008 blocks (2.37 percent).

2020 Census Address Canvassing Operations

- Temporary Census Bureau employees, known as Listers, walk the streets of designated census blocks.
- Listers will knock on doors and, using laptops, verify addresses in the Census' MAF in preparation for the 2020 count.
- Listers will attempt to contact every structure to ask about living quarters.
- In-field operation begins in August 2019 and concludes in October 2019.

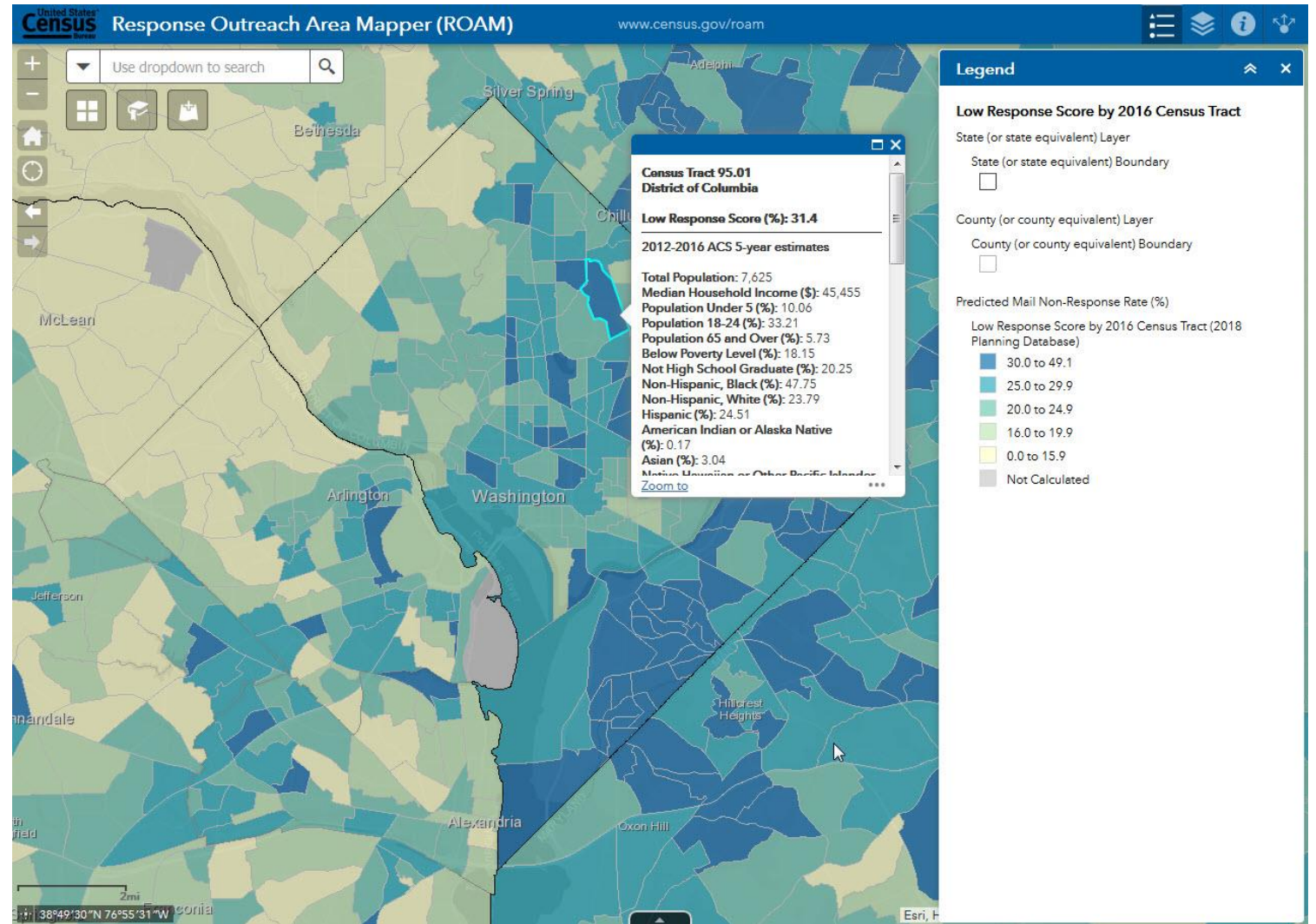


<https://gis-portal.data.census.gov/arcgis/apps/webappviewer/index.html?id=1a0004d1745547888c8fd2f4d929d42f>

2020 Census Outreach

The Integrated Partnership and Communications operation communicates the importance of participating in the 2020 Census to the entire population of the 50 states, the District of Columbia, Puerto Rico and the Island Areas to:

- Engage and motivate people to self-respond, preferably via the internet.
- Raise and keep awareness high throughout the entire 2020 Census to encourage response.



2020 Census

How the 2020 Census Will Invite Everyone to Respond

Every household will have the option of responding online, by phone, by paper form, or in person.

Nearly every household will receive an invitation to participate in the 2020 Census from either a postal worker or a census worker.



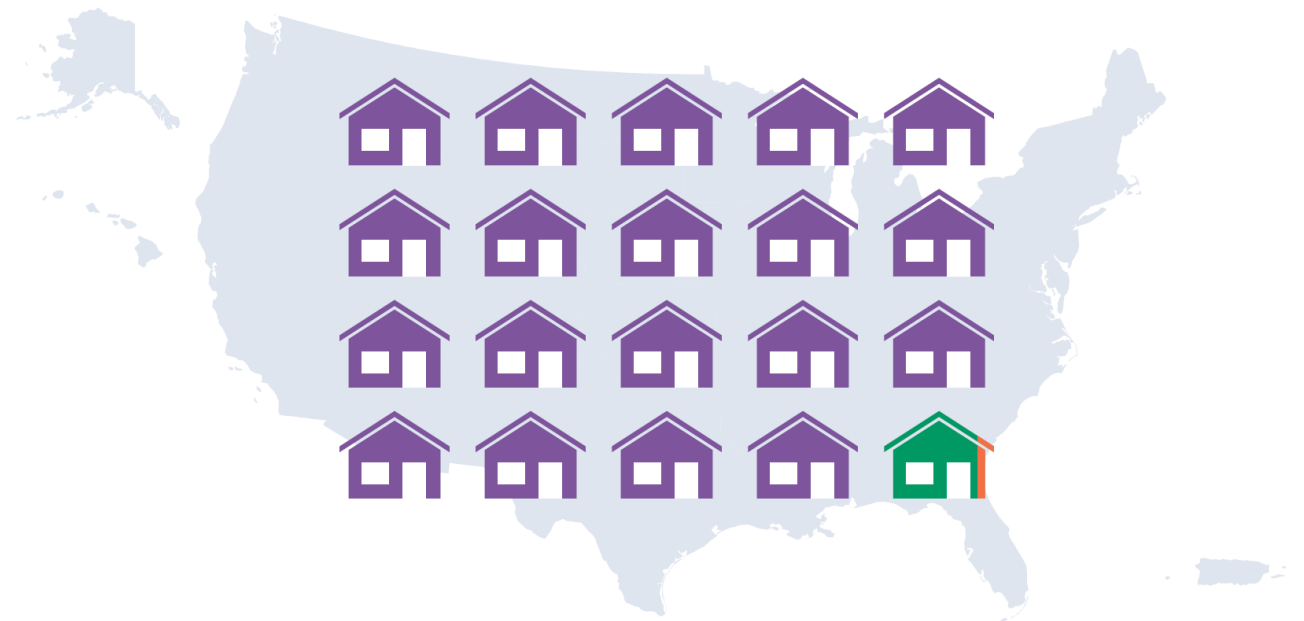
95% of households will receive their census invitation in the mail.



Almost 5% of households will receive their census invitation when a census taker drops it off. In these areas, the majority of households may not receive mail at their home's physical location (like households that use post office boxes or areas recently affected by natural disasters).



Less than 1% of households will be counted in person by a census taker instead of being invited to respond on their own. We do this in very remote areas like parts of northern Maine, remote Alaska, and in select American Indian areas that ask to be counted in person.



2020 Census

When We Start Mailing

- Initial invitations to respond to the 2020 Census will start arriving by U.S. mail on March 12.
- These will be followed by up to four additional mailings if a household has not self-responded.
- Every household that has not responded by the fourth mailing will receive a paper questionnaire arriving by U.S. mail starting on April 8.
- People who live in areas with low Internet connectivity will receive a paper questionnaire in their first mailing.
- Regardless of how households are invited to respond, respondents will be able to respond by any of the three modes—online, by phone, or by paper.



2020 Census

Responding Is Easier Than Ever—Online, by Mail, or Over the Phone

Self Response Is Easier Than Ever.

- You will be able to respond anytime, from anywhere. Regardless of how households receive their invitation to respond they will be able to do so online, by mail, or over the phone.
- The Internet Self-Response instrument has been optimized for responses from smartphones and mobile devices.
- Self-respond in English or one of 12 non-English languages.
- Print and video language guides are in 59 non-English languages provided to field partnership specialists and available online.
- Video language guide will be available in American Sign Language, print guides will be available in braille and large print.
- Partnership specialists will be hired from within local communities, emphasizing the importance of communicating in local languages.



2020 Census

How the Census Bureau Determines Areas for Bilingual Mailings

English/Spanish bilingual mailings will be sent to **all Census tracts** that have 20 percent or more of households that are recognized as needing “Spanish Assistance”—defined as at least one person aged 15 or older who **speaks Spanish and does not speak English “very well.”**¹

Census tracts with 20% or more



Bilingual English/Spanish mailings for entire census tract (bilingual questionnaires up front or in the fourth mailing).

Census tracts with less than 20%



English mailings that include a Spanish phrase inviting you to respond online or via direct toll-free line in Spanish.



Spanish online questionnaire.

Spanish phone support and response.

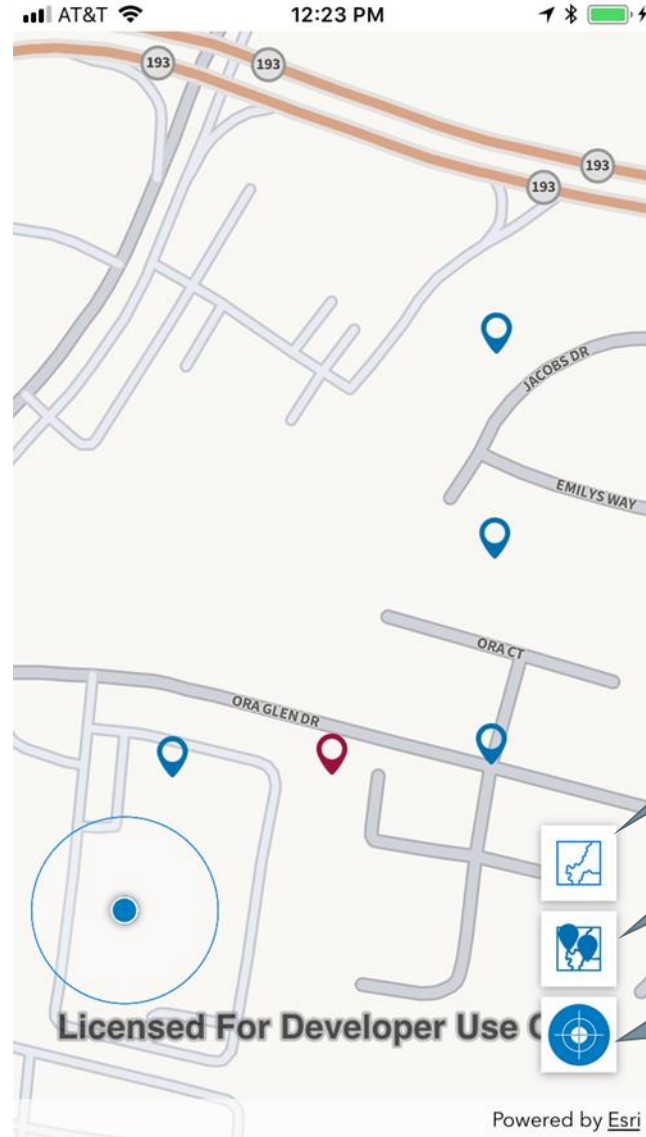


¹ Based on 2013–2017 American Community Survey, 5-year estimates.

2020 Census

Nonresponse Follow-up

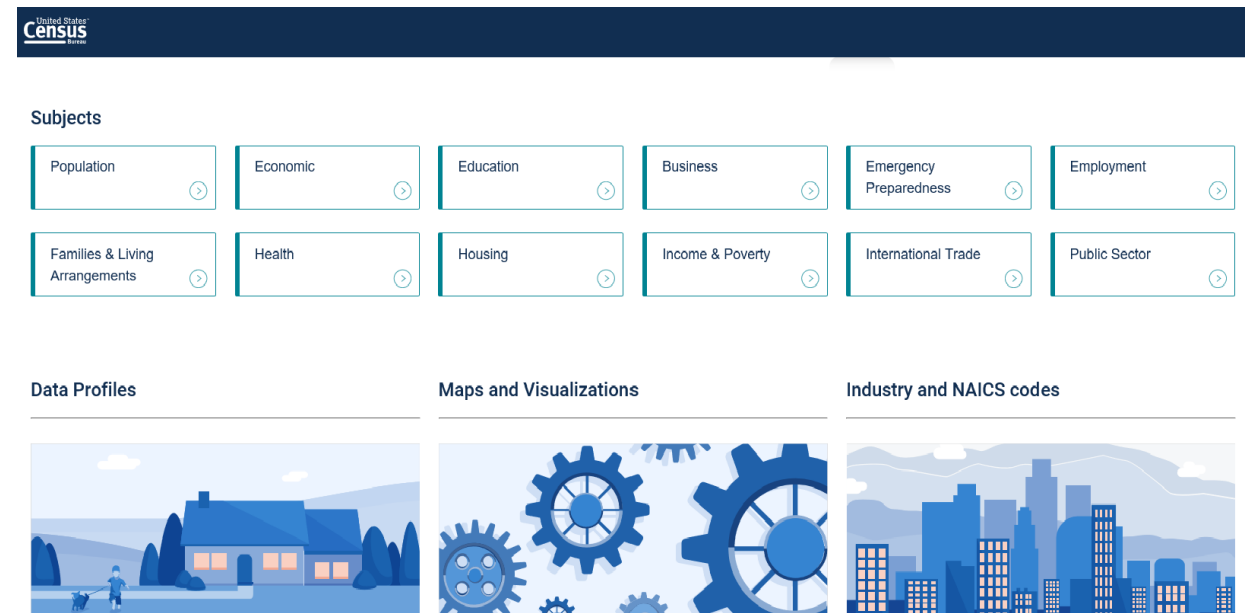
- Temporary Census Bureau employees, known as census takers, determine the housing unit status for addresses that do not self-respond to the 2020 Census.
- Census takers will personally visit housing units to count or enumerate the households.
- If no one is at home, the census taker will leave a Notice of Visit to encourage self-response.
- In most situations, census takers will make at least six attempts to resolve a case.
- In-field operation begins in May 2020 and concludes in July 2020.



2020 Census

Data Dissemination

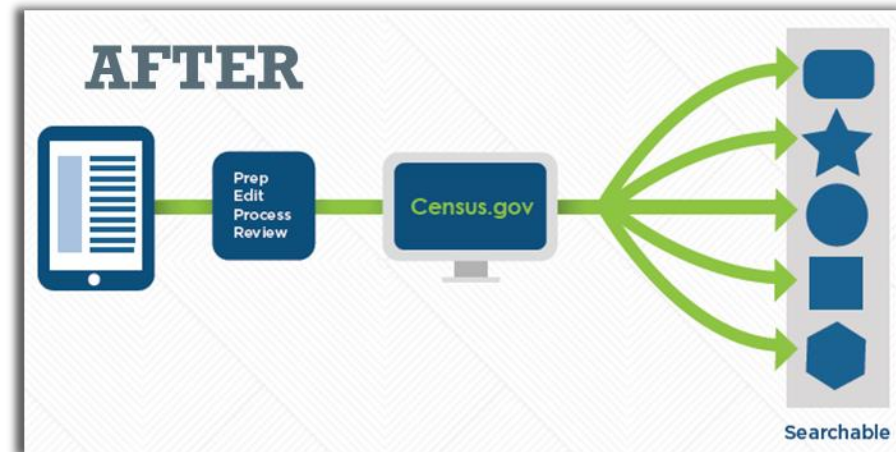
- Our vision for data dissemination is to improve the customer experience so users spend less time searching for data products and more time using them.
- Data.census.gov is the new platform to access data and digital content from the U.S. Census Bureau, created based on overwhelming feedback to streamline the way you get data.



2020 Census

Data.census.gov: A New Dissemination Platform

- Streamline users access to data
 - Tables
 - Maps
 - Data profiles
 - Unified Search
- Maintain the best of our current tools
- Reduce redundancies and operational costs
- Provide greater access to Census Bureau API



2020 Census

Data.census.gov: A New Dissemination Platform

Explore Census Data
The Census Bureau is the leading source of quality data about the nation's people and economy.

I'm looking for ...

Advanced Search

Questions?
What is data.census.gov?
When will American FactFinder (AFF) go away?
How do I get started with my search?
How do I save my results or search?

Release Notes
More data available
Table enhancements
Export to Excel
Multiple table download
Bug fixes

Stay Connected
Recorded Webinar: New Updates to data.census.gov - June 2019
Tutorials
Our development depends on YOUR feedback. Tell us how to make your experience better.
cedsci.feedback@census.gov

Total households—Family households (families)—Percent Estimate
Survey/Program: American Community Survey
Product: 2017 ACS 5-Year Estimates Data Profile
Data Variable: Total households—Family households (families)
Geographies: County

Legend
70.5–76.9
66.6–70.4
63.5–66.5
54.2–63.4
48.3–54.1
No Data

VIEW TABLE
Color Palette
Data Classes: 5
Classification Types: Natural Breaks

ALL TABLES MAPS PAGES

About 85 results | Filter

EXPLORE DATA
4.5% +/- 0.1% Veterans in New York
Source: 2017 American Community Survey 5-Year Estimates
<https://www.census.gov/programs-surveys/acs/>

EXPLORE DATA
New York Profile
New York has a total area of 47,112.5 square miles, including 7,427.8 square miles of water, making it the 30th-largest state by area.

Related Searches
Populations and People
Counts, Estimates, and Projections
Civilian Population
Age and Sex
Race and Ethnicity
Disability
Health
Education
Educational Attainment

Tables
SELECTED SOCIAL CHARACTERISTICS IN THE UNITED STATES
Survey/Program: American Community Survey
Years: 2017,2016,2015,2014,2013,2012,2011,2010 Table: DP02

New York				
	Estimate	Margin of Error	Percent	Percent Margin of Error
HOUSEHOLDS BY TYPE				
Total households	7,304,332	+/-18,884	7,304,332	(X)
Family households (..)	4,620,008	+/-22,862	63.3%	+/-0.3
With own children ..	1,885,913	+/-14,577	25.8%	+/-0.2
Married-couple fa...	3,210,469	+/-22,246	44.0%	+/-0.3
With children...	1,248,728	+/-14,345	17.1%	+/-0.2

SELECTED SOCIAL CHARACTERISTICS IN THE UNITED STATES
Survey/Program: American Community Survey TableID: DP02 Product: 2017 ACS 5-Year Estimates Data Profiles

Skagit County, Washington

	Estimate	Margin of Error	Percent	Percent Margin of Error	Estimate	Margin of Error	Percent
HOUSEHOLDS BY TYPE							
Total households	47,341	+/-481	47,341	(X)	17,534	+/-307	17,534
Family households (..)	31,961	+/-429	67.5%	+/-1.3	12,128	+/-416	69.2%
With own children ..	12,438	+/-429	26.3%	+/-0.9	4,045	+/-256	23.1%
Married-couple family	25,142	+/-627	53.1%	+/-1.4	9,531	+/-386	54.4%
With own children ..	8,524	+/-419	18.0%	+/-0.9	2,951	+/-213	16.8%
Male householder, ..	2,125	+/-285	4.5%	+/-0.6	977	+/-193	5.6%
With own children ..	1,175	+/-215	2.5%	+/-0.4	395	+/-118	2.3%
Female householder...	4,694	+/-428	9.9%	+/-0.9	1,620	+/-180	9.2%
With own children ..	2,739	+/-313	5.8%	+/-0.7	699	+/-148	4.0%
Nonfamily househol...	15,380	+/-643	32.5%	+/-1.3	5,406	+/-343	30.8%
Householder living...	11,868	+/-549	25.1%	+/-1.1	4,400	+/-355	25.1%
65 years and over	5,436	+/-344	11.5%	+/-0.7	1,955	+/-259	11.1%
Households with on...	14,105	+/-399	29.8%	+/-0.8	4,664	+/-262	26.6%
Households with on...	15,960	+/-268	33.7%	+/-0.6	6,506	+/-172	37.1%

Thank You

Deirdre Dalpiaz Bishop
Chief of Geography Division

U.S. Department of Commerce
U.S. Census Bureau
4600 Silver Hill Rd.
Suitland, Maryland 20746

Office: 301-763-1696
deirdre.dalpiaz.bishop@census.gov