



United States Department of Agriculture
Departmental Administration

Office of Security Services (OSS)



Using Google Earth to Integrate & visualize GIS Data & Real-time Natural Disaster Information

Yun Li

Emergency Programs, Office of Security Services, USDA

Yun.li@usda.gov



Outline

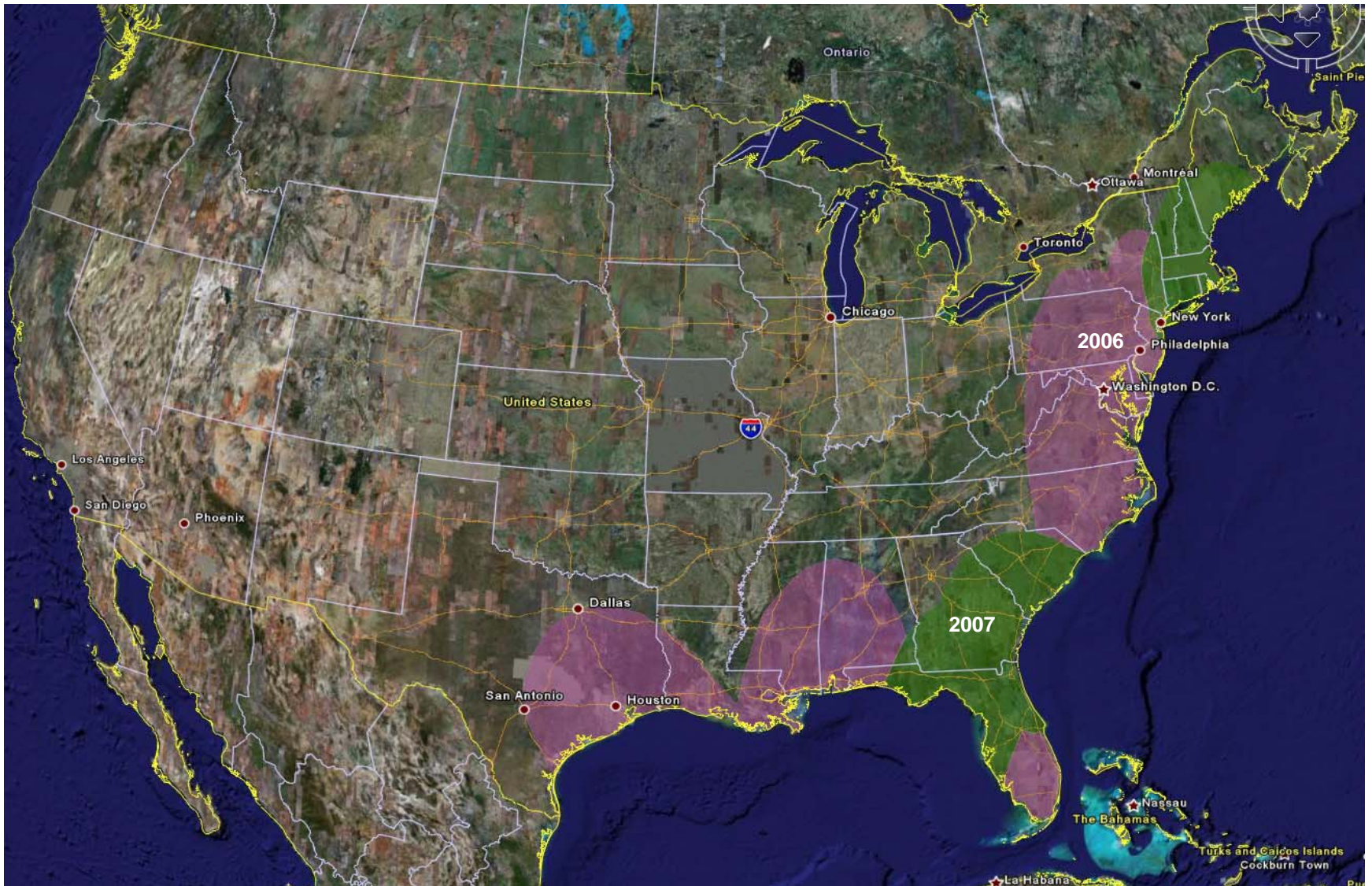
- **Google Earth Overview**
- **How to view Emergency related GIS data via Google Earth**
- **How to link the Real time Natural Hazard data on Google Earth**
- **Conclusion**



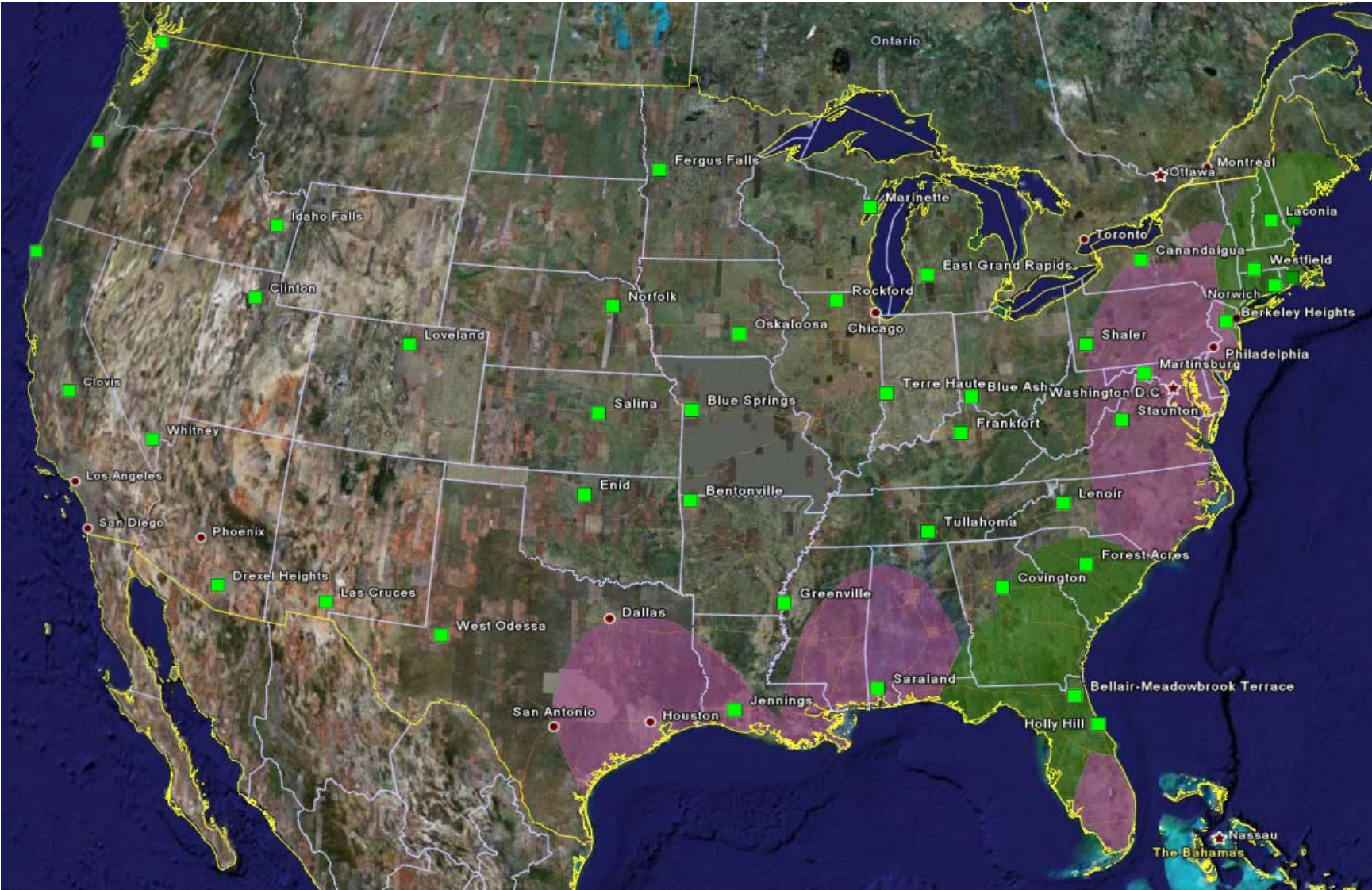
Google Earth Overview

- Google Earth combines the power of Google Search with satellite imagery, maps, terrain and 3D buildings to put the world's geographic information at your fingertips.
- A powerful solution for utilizing any form of geospatial data
- Free download 3D global maps of the earth
- High Performance
 - Consolidation of different data layers into a single view
 - No “click-and-wait”
 - Truly interactive interface, visual
 - End user is the priority
 - Low technical skill
 - Integrate your own data to Google Earth.

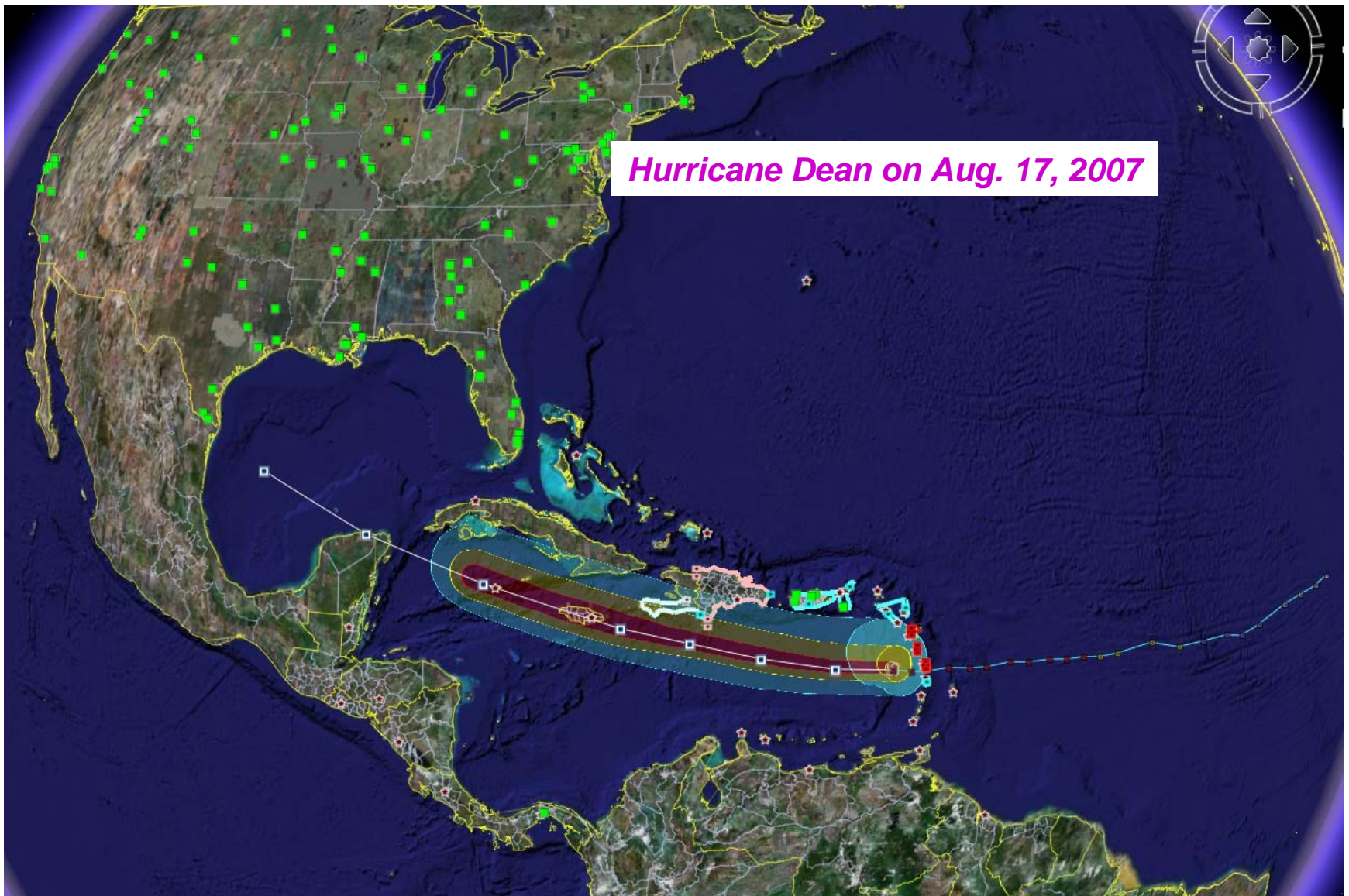
Using GIS Data in Google Earth For 2007 Pre - Hurricane Season



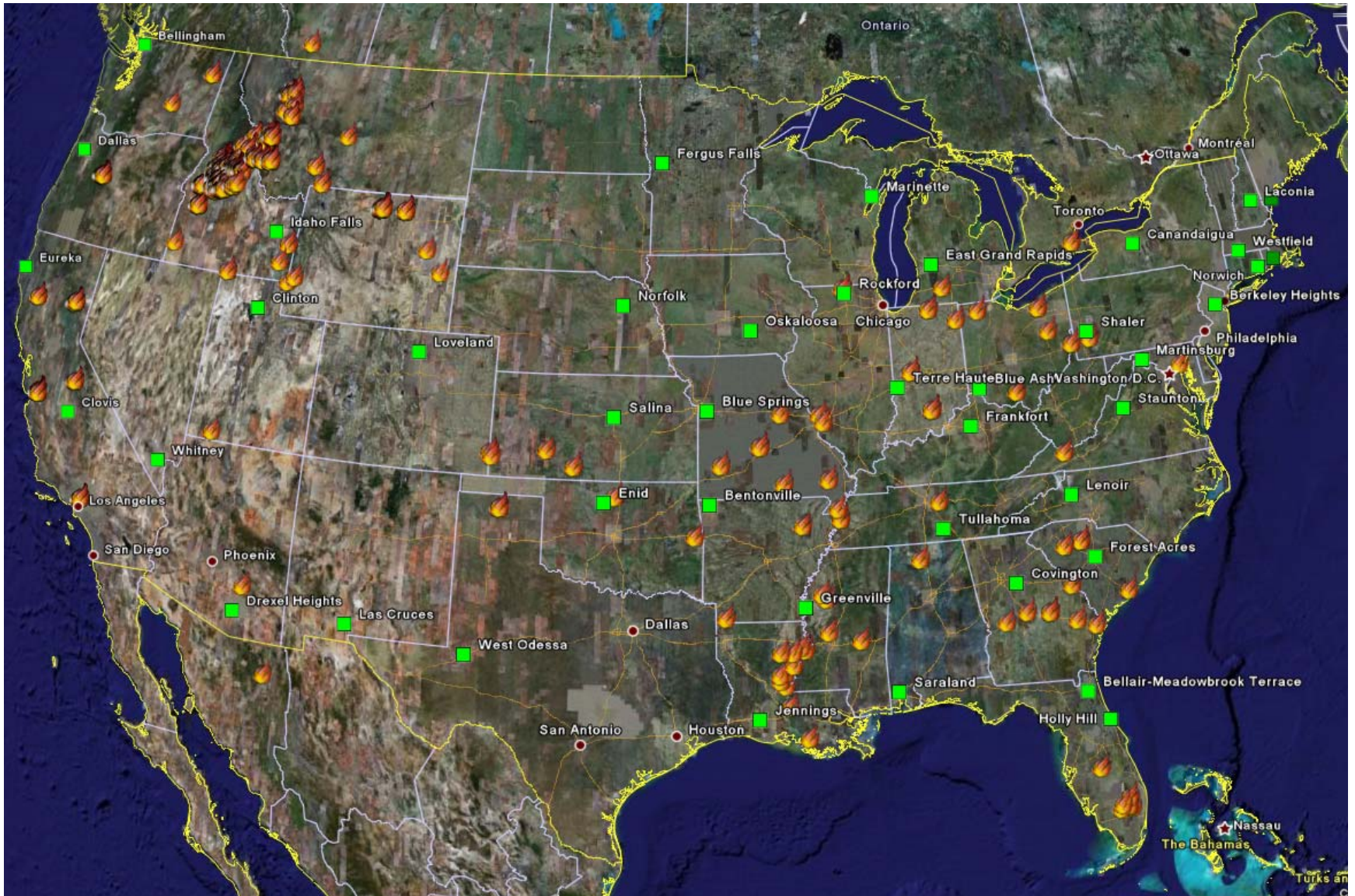
Using GIS Data in Google Earth For 2007 Pre - Hurricane Season



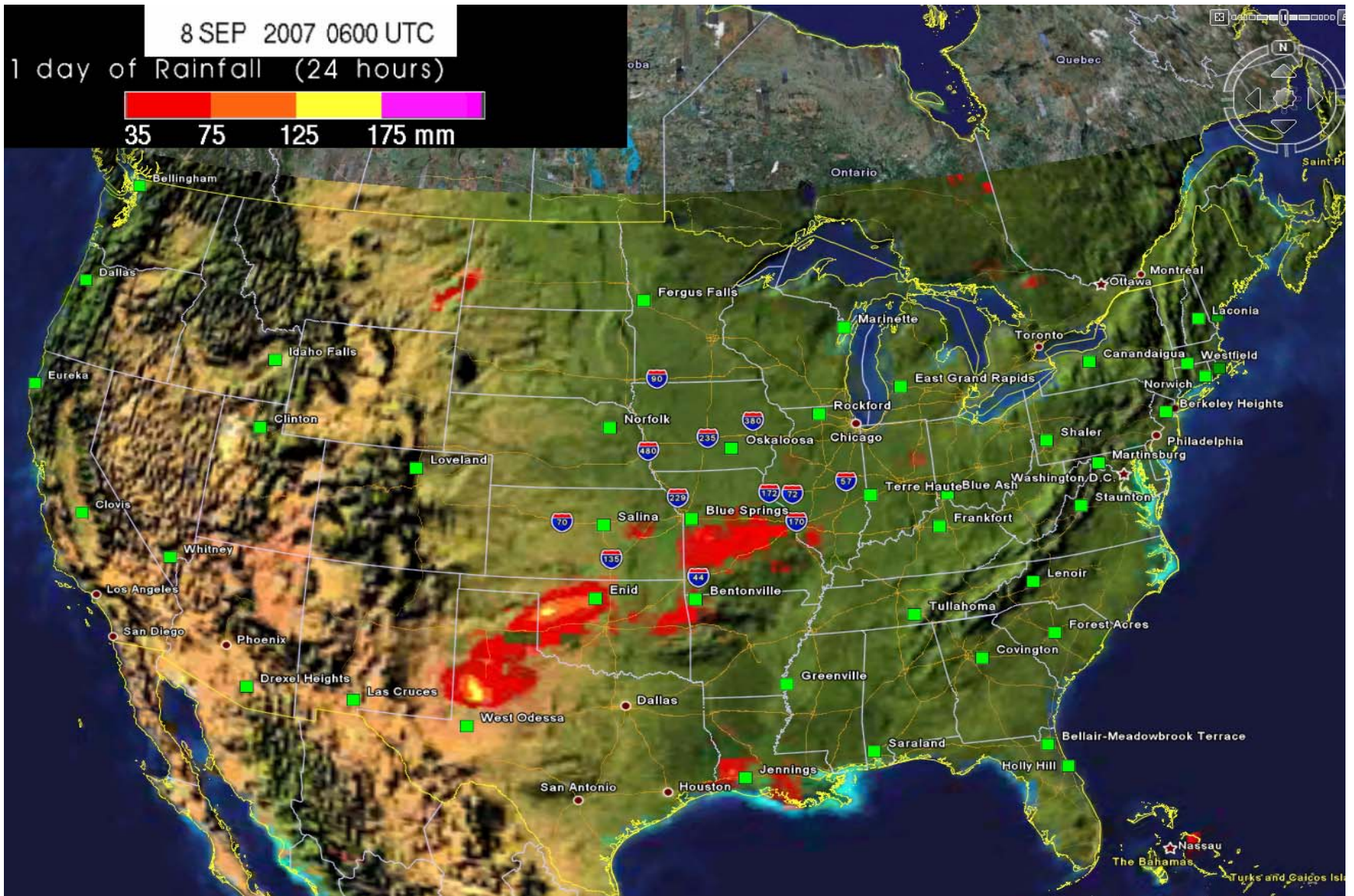
Real-time (Hurricane) data visualization



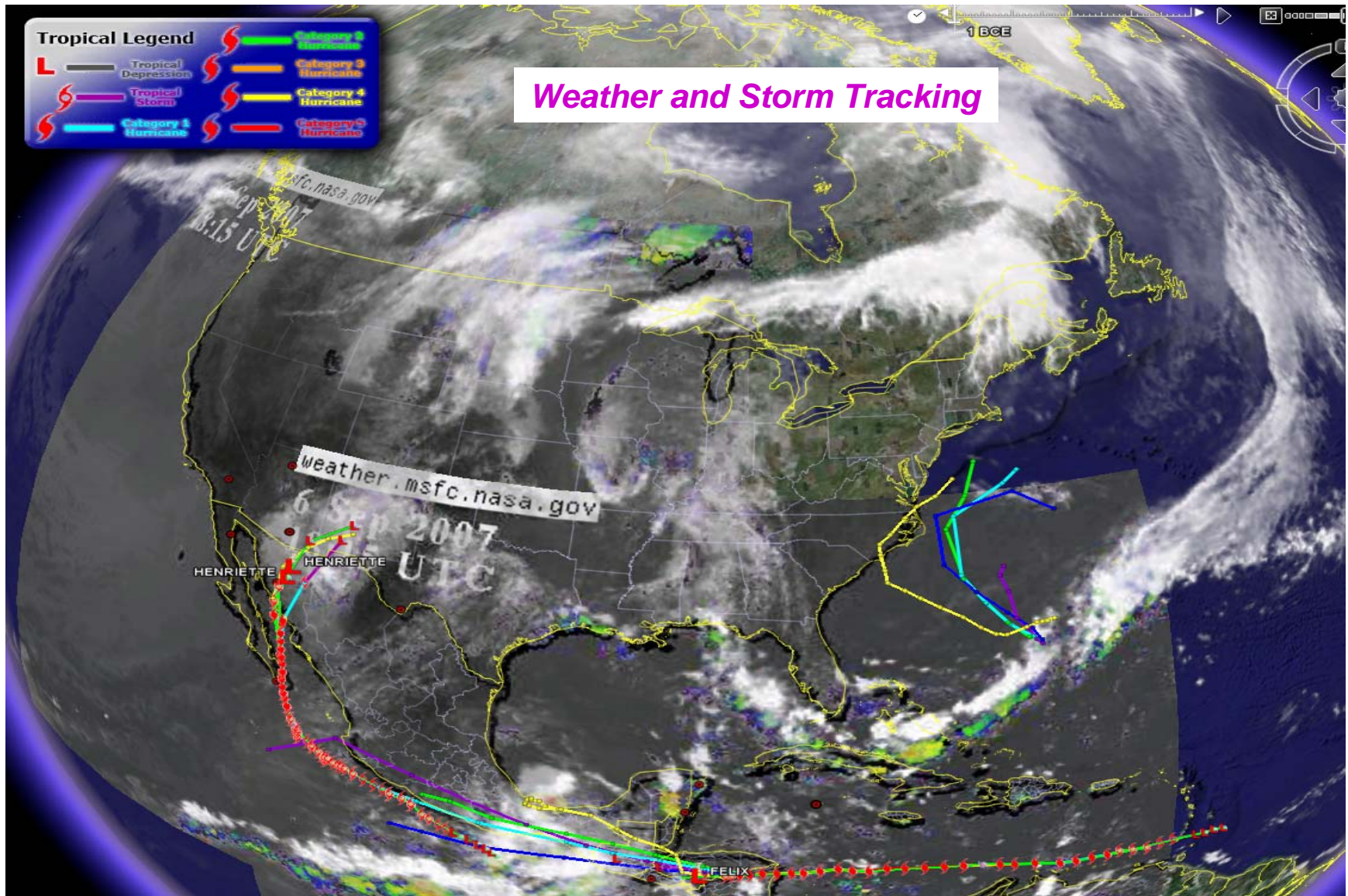
Real-time (Fire) data visualization



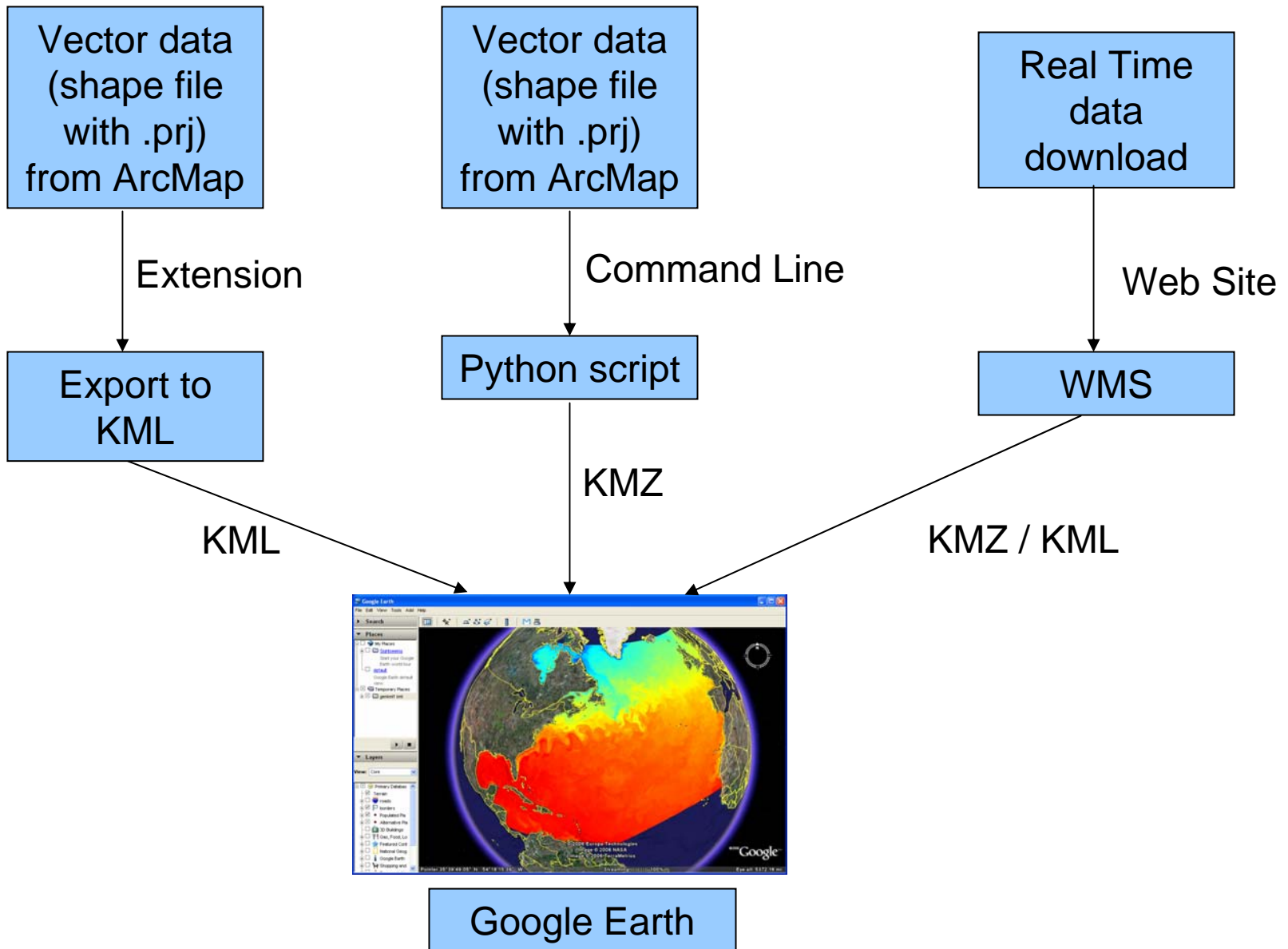
Real-time (Rainfall) data visualization



Real-time (Weather) data visualization



How to link the Data to Google Earth





Using GIS Data in Google Earth

- Google Earth allows for easy visualization that comes with an easier learning curve for the user than ArcScene
- Google Earth Files - KML/KMZ
- KML – stands for Keyhole Markup Language
- KMZ – stands for KML - Zipped



ArcMap Resources

- ArcMap Scripts – Export Shapefile to KML / KMZ
- Download ArcGIS Extension:
Export to KML v2.3.6:
<http://arcscripts.esri.com/details.asp?dbid=14273>
Last modified: June 12, 2007
- At ArcGIS, it must be a shapefile, must have a .prj
- You can control display with style, symbol, and color in ArcMap /
Google Earth
- ArcMap Demo



Real Time Natural Hazard Google KML file download Sites

Fire information – updated every 24 hours

<http://maps.geog.umd.edu/firms/kml/>

Rainfall and flood potential information – updated every 24 hours

http://trmm.gsfc.nasa.gov/affinity/download_kmz.html

Hurricane information – updated every 3 hours

<http://hurricanemapping.com/data/>

Best storm tracking and weather tools

http://www.gearthblog.com/blog/archives/2007/08/best_storm_tracking_and_weather_tools_f_or_google_earth.html

Weather data for the US from NOAA -- updated every 1 to 2 minutes

http://www.gearthblog.com/blog/archives/2006/05/near_realtime_s.html

Current world-wide disasters

http://www.gearthblog.com/blog/archives/2007/08/news_roundup_peru_ea.html



Google Earth Resources

- Google Earth central:
<http://earth.google.com/>
 - Community discussion of Google Earth:
<http://bbs.keyhole.com/ubb/ubbthreads.php/Cat/0>
 - Technical specifications and tutorial for KML files:
<http://earth.google.com/kml/>
 - A rather pleasant online interface to the same information:
<http://www.keyhole.com/kml/docs/webhelp/>
- Further information:
<http://www.ogleearth.com/index.html>
<http://www.googleearthhacks.com/>



Conclusion

- Using Google Earth is fun and easy
- Integration+Visualization+Collaboration --
Google Earth and GIS data integrating provides a better overview
- You can use Google Earth to capture the work you're doing
- By creating and downloading KML files, anyone, anywhere can fly in Google Earth
- No cost
- This can help us increasing our knowledge and understanding dynamic changes of our environment.



United States Department of Agriculture
Departmental Administration

Office of Security Services (OSS)



Q&A