

Wetlands Subcommittee FY17 Report

Megan Lang

Chief Scientist

National Wetlands Inventory

November 14th, 2017



Introduction

The Mission/Purpose of the Wetlands Subcommittee is:

- 1) to promote standards of accuracy and consistency in spatial wetlands data financed in whole or in part by Federal funds;
- 2) to exchange information on technological improvements for collecting spatial wetlands data;
- 3) to encourage the Federal and non-Federal communities to identify and adopt standards and specifications for spatial wetlands data; and
- 4) to collect and process the requirements of Federal and non-Federal organizations for spatial wetlands data.

Introduction

Members organizations include – but are not limited to:

- Department of Interior
- Department of Commerce
- Department of Defense
- Department of Energy
- Department of Agriculture
- Department of Homeland Security
- Department of Housing and Urban Development
- Department of Transportation
- Environmental Protection Agency
- National Capital Planning Commission
- Tennessee Valley Authority

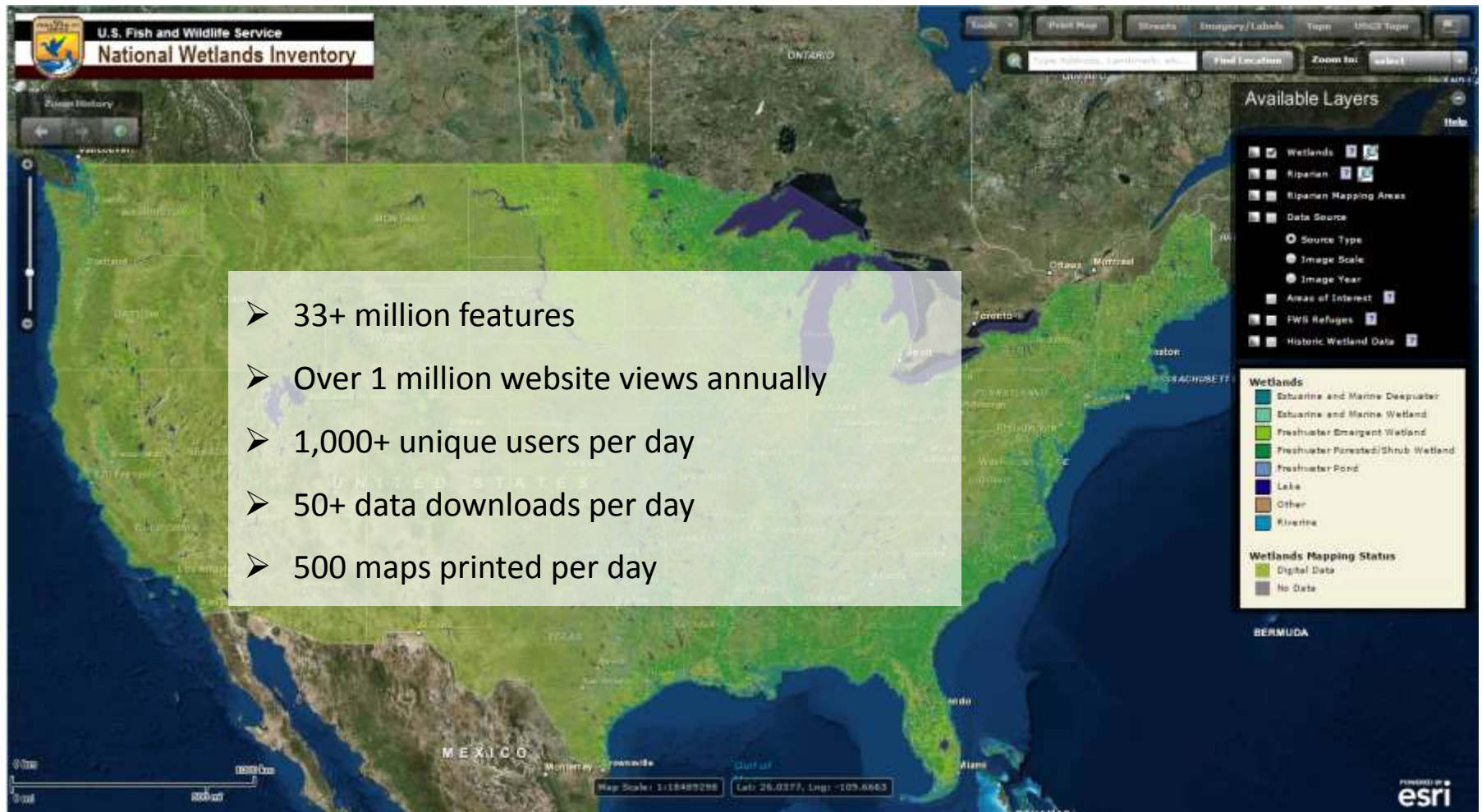
NGDA Data Themes and Data Sets

- The National Wetland Inventory falls under the purview of the Wetlands Subcommittee
 - Dataset Manager: Mitch Bergeson, USFWS
- The Wetlands Subcommittee is associated with the Inland Water Theme.
 - Theme Co-Leads: Becci Anderson, USGS and Megan Lang, USFWS

Recent Developments/Projects

- Additions to the NSDI wetlands layer
- Wetland Mapping Targeting Tool
- Interagency Wetland Mapping Workgroup
- Wetlands Status and Trends project

NSDI Wetlands Layer (NWI Geospatial Dataset)



NSDI Wetlands Layer



Example:
New Jersey
4.5M acres

FY17 Additions

- 30M acres contributed by 9 federal, state, and local agencies
 - All data were subject to rigorous quality control and assurance protocols and met the FGDC National Wetlands Classification Standard

NSDI Wetlands Layer

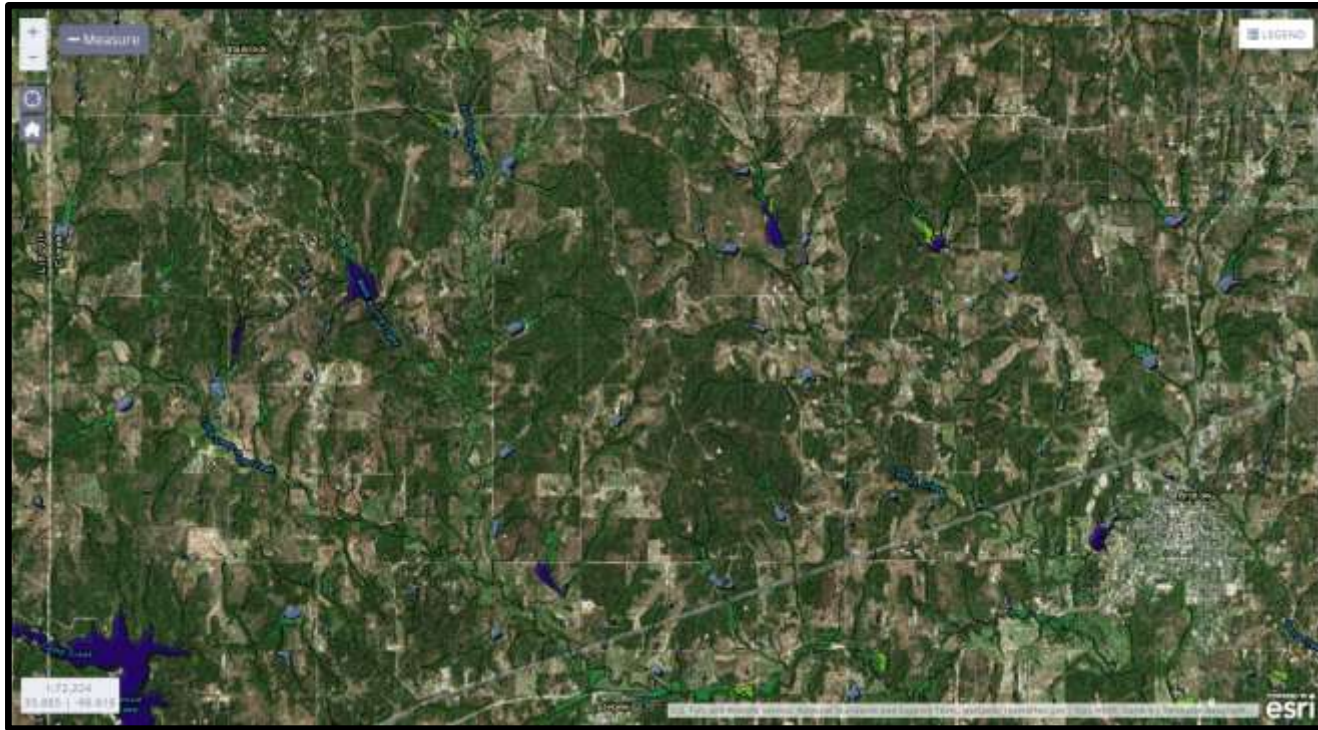


Example:
Nevada
5.4M acres
Focus: Sage
Grouse Habitat

FY17 Additions

- 30M acres contributed by 9 federal, state, and local agencies
 - All data were subject to rigorous quality control and assurance protocols and met the FGDC National Wetlands Classification Standard

NSDI Wetlands Layer



Example:
Oklahoma
Little Deep
Fork
Watershed

FY17 Additions

- 30M acres contributed by 9 federal, state, and local agencies
 - All data were subject to rigorous quality control and assurance protocols and met the FGDC National Wetlands Classification Standard

Wetland Mapping Targeting Tool (WMTT)

Introduction

- Want to identify areas with greatest need for updated NWI data to guide the investment of limited resources
 - Dataset age alone should not determine update priority
 - Data are still contemporary if land cover has not changed

❖ The WMTT was developed to guide investment of resources to best meet needs of a wide array of users.

- Easy to use
- Spatially explicit
- Can be tailored to meet multiple application needs
- Facilitates the budgeting and justification process
- Helps ensure that the NWI dataset is contemporary

Wetland Mapping Targeting Tool (WMTT)

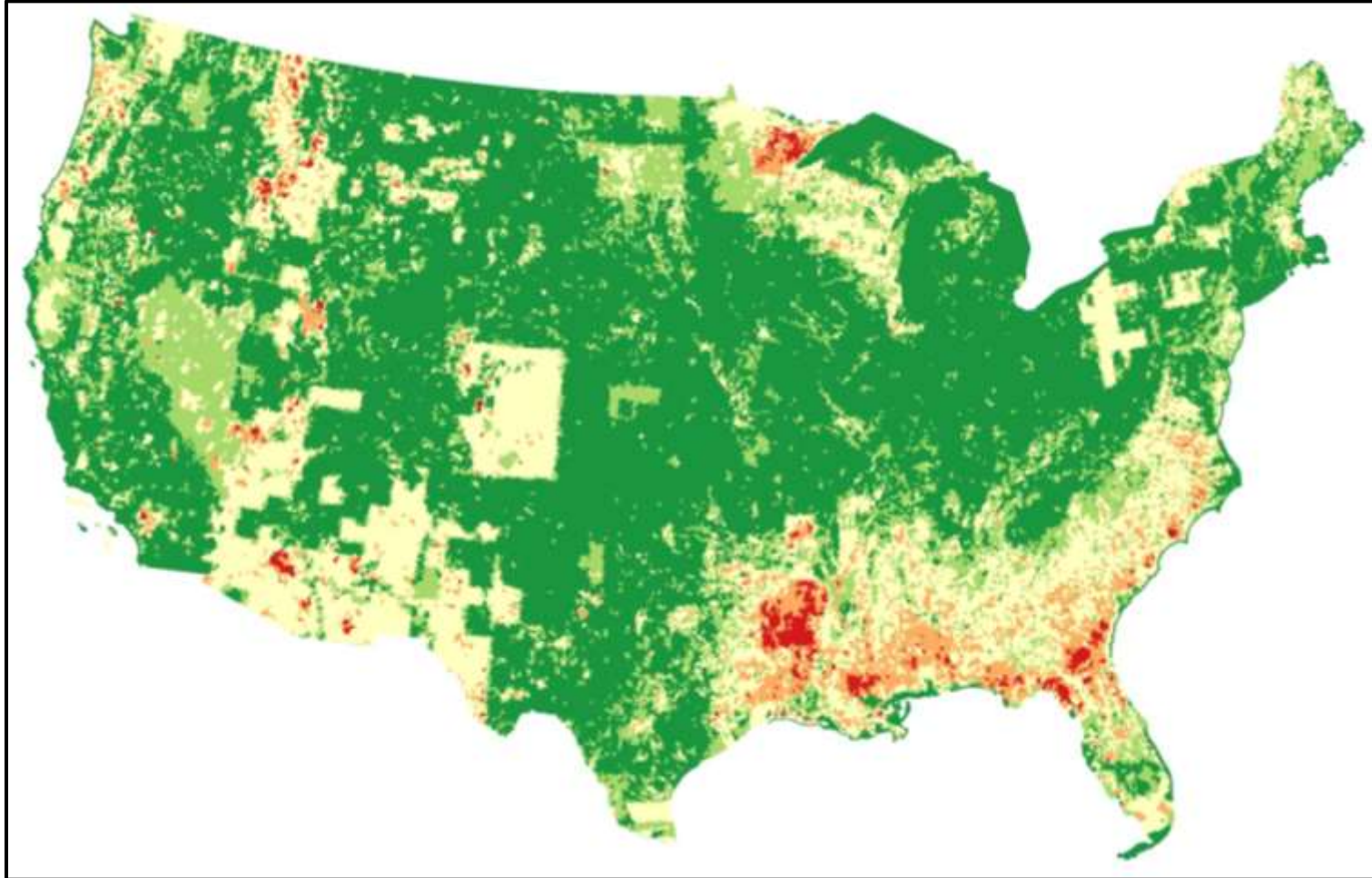
Two primary inputs:

- Raster foundation
- Vector overlays

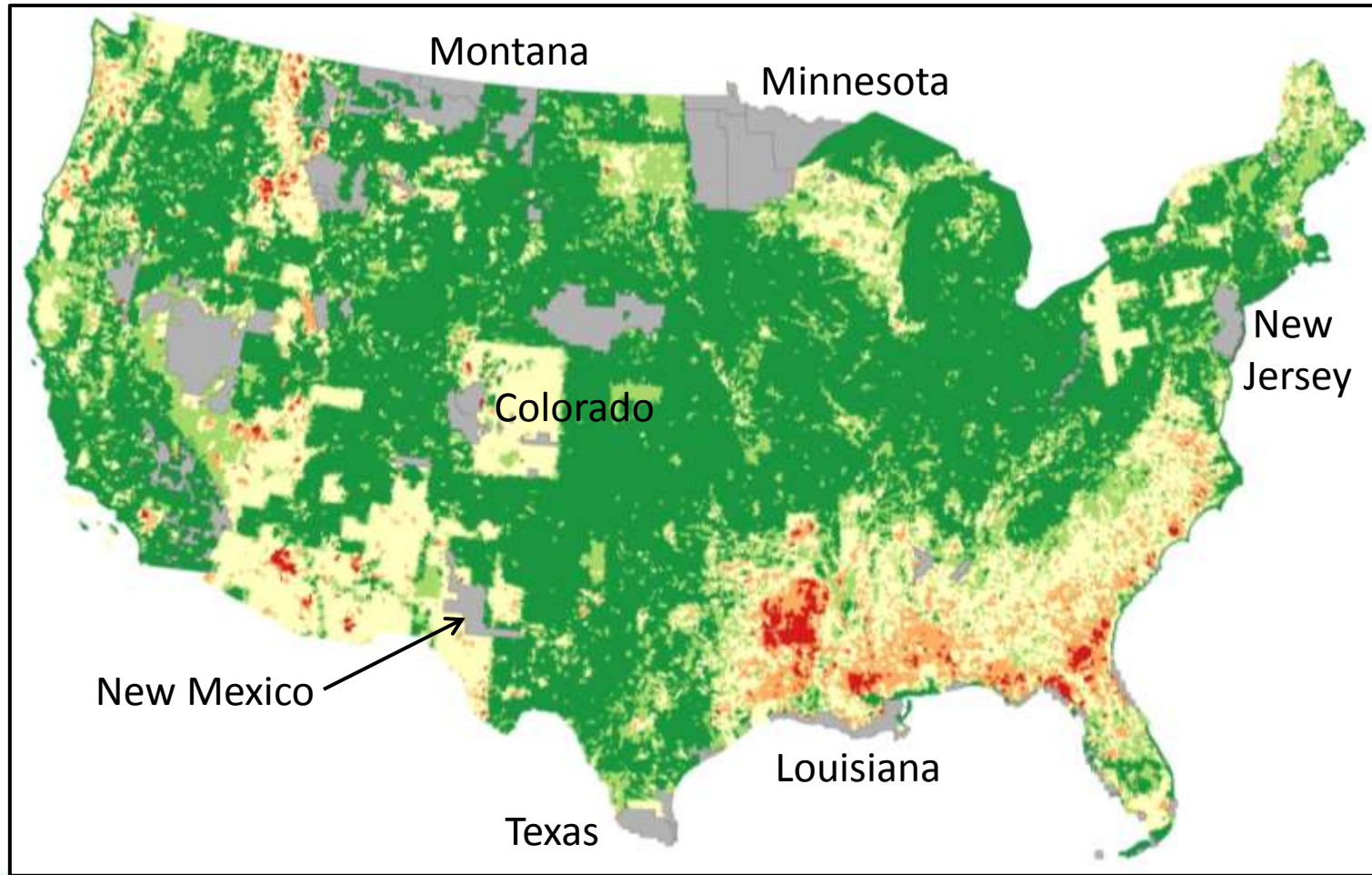
❖ Raster foundation based on four inputs

- Land cover change
- Population growth
- Wetland density
 - Averaged within HUC12
- Base image properties
 - Spatial scale
 - Emulsion
 - Year

WMTT Raster Foundation



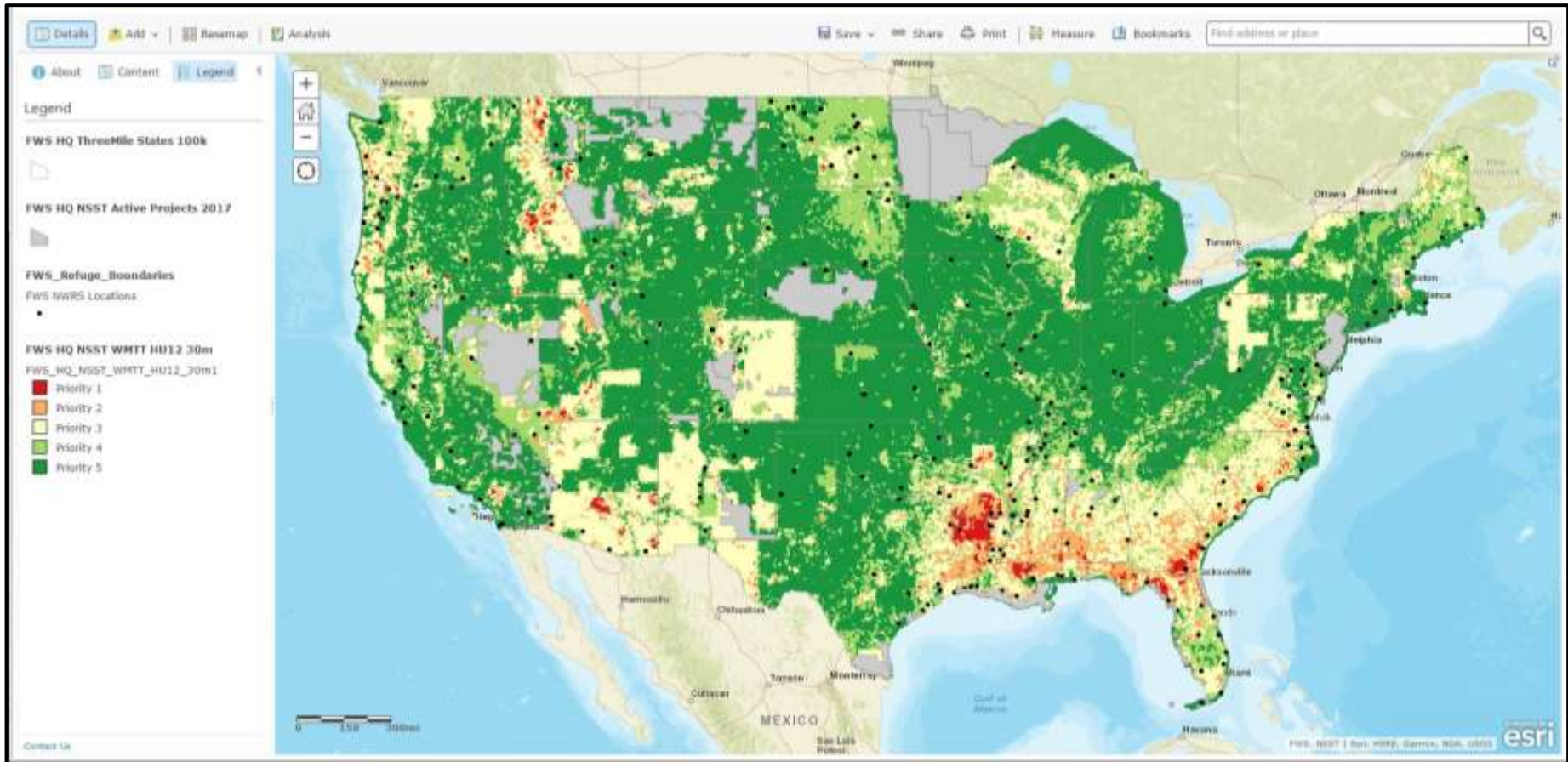
WMTT Raster Foundation



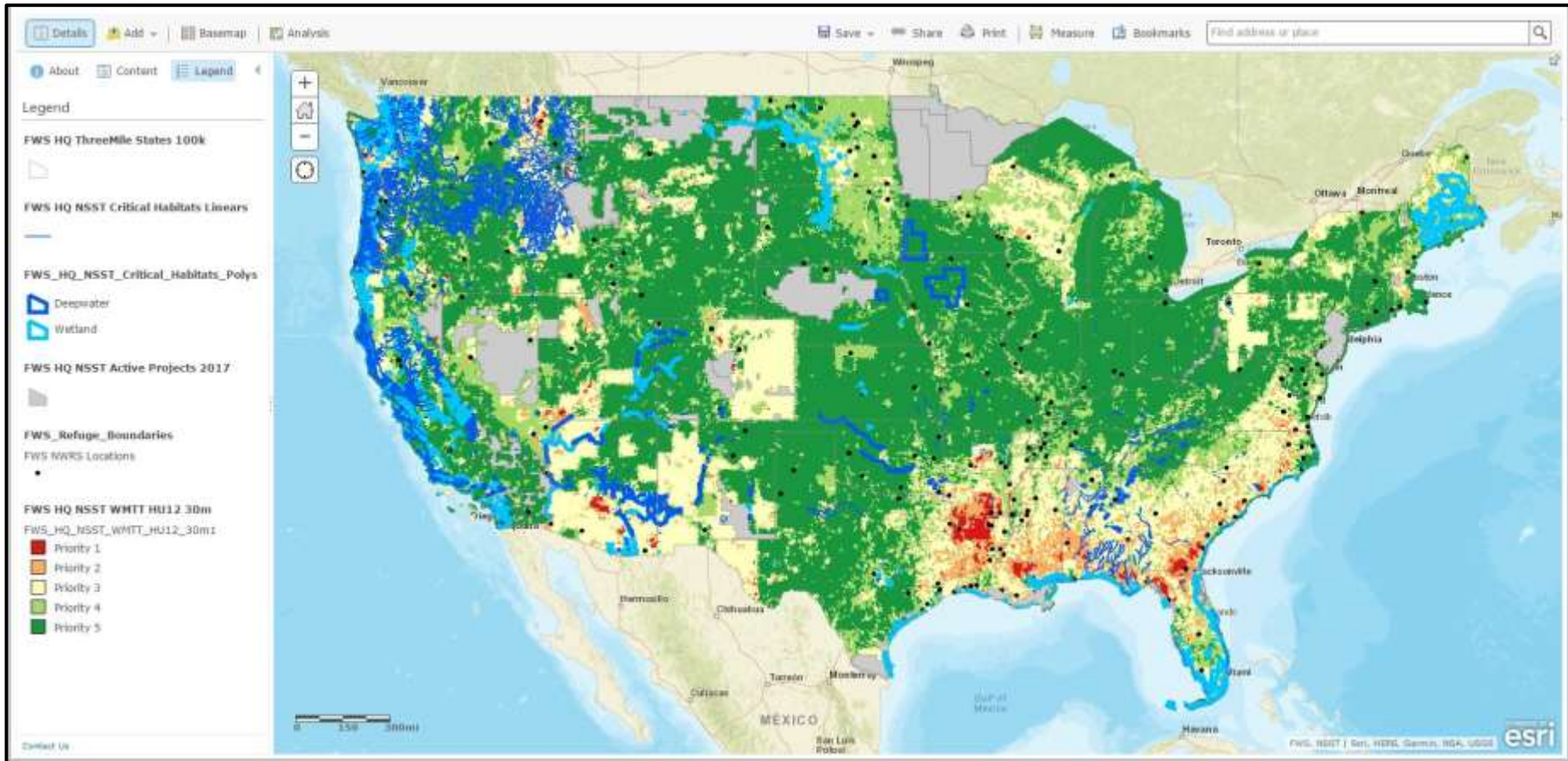
Gray = Active Projects



Vector Overlays



Vector Overlays



Wetland Mapping Targeting Tool

Summary

- Future updates to the NSDI wetlands layer will be guided by the WMTT.
 - Easy to use, spatially explicit, and can be tailored to meet multiple application needs.

❖ Next Steps

- Share WMTT with partners
 - ArcGIS online
 - REST services
- ❖ Gather feedback
- ❖ Make additions / modifications where necessary

Interagency Wetland Mapping Workgroup

Introduction

- Formed in 2016 with members from NOAA, USGS, and USFWS – including managers of research and operational datasets that directly support wetland mapping
 - IWMW supports the Wetlands Subcommittee through the open exchange of data and techniques across federal agencies to best support the development of the Wetlands layer of the NSDI.
- ❖ FY17: Led session at Society of Wetland Scientists entitled: “Mapping and Monitoring Wetlands Across the US to Support Strategic Management of Natural Resources”

NWI Wetlands Status and Trends (S&T) Report

Monitoring component of the National Wetlands Inventory

- Survey based dataset produced on a decadal time-step
- Temporally consistent information on wetland and deepwater habitat area and change to support broad-scale policies

❖ 2019 S&T Report

- Data collection will be initiated in FY18
- Report expected FY22
 - Data will be used to supplement and further target updates to the NSDI wetlands layer.

Next Steps

- ❖ In the coming year, the Wetlands Subcommittee hopes to:
 - Develop a maintenance communications plan.
 - Further vet the Wetland Mapping Targeting Tool.
 - Establish a data development subgroup.
 - Continue communications with other federal agencies regarding data and techniques that could be used to support development of the wetlands layer of the NSDI.
 - Support production of outreach publications.
 - Review Wetlands Subcommittee charter

Questions?

Megan Lang, USFWS

(703) 358-2103

Megan_Lang@fws.gov